

THE KITCHEN COLLECTION  
SPRING/SUMMER 2018

# Magnet

*part of the family*



**Kitchens aren't  
just a place to cook,  
they're where  
life is lived and  
memories made  
year after year.**

---

That's why Magnet kitchens are  
more than part of the furniture,  
they're part of the family.



# Magnet

*part of the family*



# YOU GET MORE THAN A KITCHEN WITH MAGNET

---

We understand how important your kitchen is to family life. That's why, when you choose Magnet you get more than just a kitchen, you get a company that's dedicated to creating kitchens that are part of the family.



## HERITAGE

100 years of  
experience from a  
name you can trust



## SERVICE

An appointed designer  
will be with you every step  
of the way, including a post  
installation home visit



## DESIRABILITY

A Magnet kitchen  
adds value  
to your home



## INSTALLATION

With TrustMark accredited  
installers and a one year  
Smart Care home check

**Discover more about Magnet and what more we can offer on pages 159-161.**



## REPUTATION

Recommended by  
our customers with a  
Trustpilot score of 9.0

Trustpilot score correct at time of going to print.



## QUALITY

Kitchens manufactured  
in the UK to last, with  
guarantees to match

# CONTENTS

**KITCHENS MADE EASY..... 6**

### STEP 1 - SELECT YOUR STYLE

TRADITIONAL KITCHENS..... 10

MODERN KITCHENS..... 56

### STEP 2 -

CHOOSE YOUR CABINET..... 127

### STEP 3 -

ACCESSORISE YOUR SPACE..... 128

### STEP 4 -

CHOOSE YOUR APPLIANCES,  
SINK AND TAPS..... 151

### STEP 5 -

PICK YOUR INSTALLATION  
PACKAGE..... 153

### STEP 6 -

DESIGN, QUOTE AND  
PAYMENT OPTIONS..... 154

### STEP 7 -

ORDER, DELIVERY AND  
INSTALLATION..... 157

FULL CIRCLE SERVICE..... 159

GUARANTEES..... 160

SHOWROOMS..... 162



# KITCHENS MADE EASY BY MAGNET

---

## 1

### SELECT YOUR KITCHEN STYLE AND COLOUR

Choose from 15 door styles, each available  
in a variety of colours and woodgrains.



Find our kitchen ranges from page 8 -125.

## 2

### CHOOSE YOUR CABINET

Three cabinet options to choose from – Simply Ready to  
Assemble, Factory Assembled and Premium iD<sup>3</sup>, which is  
available exclusively with our Uniquely kitchens.



Turn to page 127 for more details.

## 4

### CHOOSE YOUR APPLIANCES, SINK AND TAPS

Select from a wide choice of the world's leading brands.



Turn to page 151 for details or pick up a copy of our appliance brochure.

## 5

### PICK YOUR INSTALLATION PACKAGE

Choose from our Gold, Silver or Bronze installation packages,  
all accredited by the government-backed TrustMark scheme.  
Or you can arrange your own installation.



Find out more on page 153.

We understand that your dream kitchen may seem a long way off right now; there's a lot to think about and some big decisions to make along the way. These seven steps will guide you through the process, and as part of our unique Full Circle Service, an appointed designer will be with you every step of the way.

**3**

### **ACCESSORISE YOUR SPACE**

Add the finishing touches to your kitchen from a wide range of worktops, handles and storage solutions.



Discover our accessories on page 128.

**6**

### **RECEIVE YOUR DESIGN, QUOTE & PAYMENT OPTIONS**

Using your measurements, or after a home survey, we will design your kitchen using the latest 3D software to provide you with a quote along with some flexible payment options.



Learn more about our design options on page 154.

**7**

### **AGREE YOUR ORDER, DELIVERY AND INSTALLATION**

Once you're completely happy with your design, we'll agree your delivery and installation dates – leaving you to look forward to making your new Magnet kitchen part of your family.



Find out more on page 157.

## STEP 1 SELECT YOUR KITCHEN STYLE AND COLOUR

Choose from 15 door styles, each available  
in a variety of colours and woodgrains.







Capture the atmosphere of the countryside with stylish dinnerware and square edged wood effect laminate worktops.



## TRADITIONAL

Timeless yet fresh, Traditional kitchens embody a style that everyone can feel at home in. Our Newbury White boasts a neutral colour palette with simple, unfussy details that can easily be modified with more modern touches. If Traditional is the look for you, keep browsing to find your perfect style and colour.

### HANDLES

Traditional handles suit shaker or slab-in-form doors perfectly. Consider handles in brushed steel for a more traditional touch.



### COLOUR

Choose neutrals for a calm and timeless look, then combine with different shades to suit your tastes. Greens work well if your kitchen looks out to a garden.



**New Winchester Acacia.**  
The natural warmth of this Winchester Acacia kitchen feels high quality and homely at the same time. **Page 42**





New Dunham Dove Grey. Page 36



## CONTENTS

<b>SOMERTON</b> .....	<b>12</b>
– Cream, Duck Egg, Fern, Sage	
<b>NEWBURY</b> .....	<b>20</b>
– Grey, Midnight, White	
<b>LEYBURN</b> .....	<b>26</b>
– Oak	
<b>SHAKER</b> .....	<b>28</b>
– Cream	
<b>DUNHAM</b> .....	<b>30</b>
– Midnight, Sky, Grey, Dove Grey, White	
<b>WINCHESTER</b> .....	<b>40</b>
– Blue, Acacia, Cream, Grey	
<b>LEIGHTON</b> .....	<b>48</b>
– Gloss White, Grey	
<b>TATTON</b> .....	<b>52</b>
– Oak, Cream	



uniquely







# SOMERTON

## CREAM

We like the way the clean lines of this kitchen work perfectly with the flat frame panelling, visible graining and chunky end panels. It makes for a simple and contemporary style.

There's a wide range of handle options and accessories, so you can put your own twist on this design.



### CABINET OPTIONS



PREMIUM iD³



FACTORY  
ASSEMBLED



## SOMERTON

### DUCK EGG

The elegant Somerton is the ultimate proof that classic kitchens don't have to be white. Featuring solid shaker doors and an oak timber worktop, the Somerton would look right at home in a mid-century country house. Unlike the classic styles however, the Somerton boasts distinctive coloured cabinets, effectively brightening any room.

#### CABINET OPTIONS



PREMIUM iD<sup>3</sup>



FACTORY  
ASSEMBLED





uniquely





# SOMERTON

## FERN

The smart earthy green paintwork on the cabinets make this kitchen a good fit for traditional homes. We like the way you can still see the grain of the wood showing through the finish.

And granite worktops with stainless steel accessories work well together if you want the cabinets to really stand out.

### CABINET OPTIONS



**PREMIUM iD<sup>3</sup>**



**FACTORY  
ASSEMBLED**



uniquely



## SOMERTON

### SAGE

This alternative to cream combines a light shade of green with a soft grey undertone. It creates a traditional looking kitchen that works perfectly with a solid wood worktop.

We think this kitchen goes really well with a country cottage style. But you can easily personalise the look, so it's great in traditional or contemporary homes.

#### CABINET OPTIONS



PREMIUM ID<sup>3</sup>



FACTORY  
ASSEMBLED





## NEWBURY

### GREY

With its moody, mid-grey finish, the sophisticated Newbury Grey will become the talking point of your home. It's packed with ingenious features like a built-in spice rack and full length larder unit. And there's plenty of room to showcase who you are, with a beautiful display dresser that sets off your favourite pieces to stunning effect.



#### CABINET OPTIONS



PREMIUM ID³



FACTORY  
ASSEMBLED





uniquely







# NEWBURY

## MIDNIGHT WITH NEWBURY DUCK EGG

The Newbury Midnight is a gorgeously dark kitchen that adds a touch of drama to any home. The contemporary slab-in-frame doors and seashell hood give a focal point to the room and, when paired with Newbury Duck Egg, the kitchen boasts an unusual yet striking contrast.

### CABINET OPTIONS



PREMIUM iD³



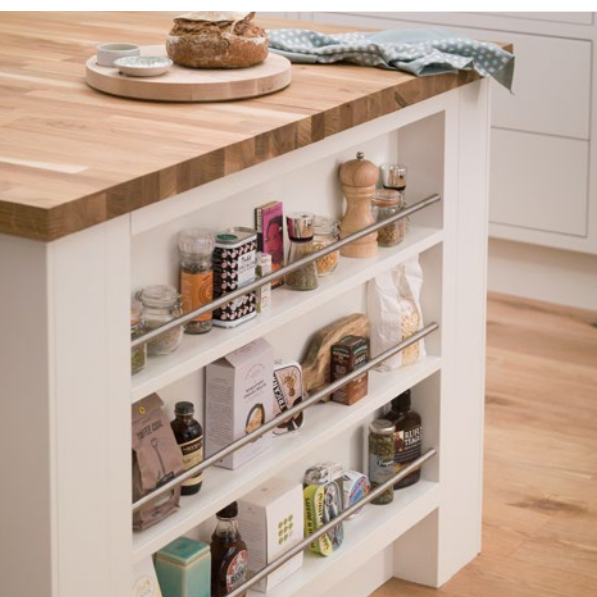
FACTORY  
ASSEMBLED



## NEWBURY

WHITE

A true kitchen classic with a subtle, off-white matt finish that's stunning in its sheer simplicity. Yet there's plenty going on in this feature packed design, including a floor to ceiling larder, an integrated spice rack, and a gorgeous free standing dresser with shelf after shelf of stylish display space.



CABINET OPTIONS



PREMIUM iD<sup>3</sup>



FACTORY  
ASSEMBLED





uniquely



CABINET OPTIONS



PREMIUM iD³



FACTORY  
ASSEMBLED



## LEYBURN



### OAK

With a light oak finish and veneered centre panel with stepped detail, the Leyburn Oak provides a rustic space to cook and enjoy hearty meals with all the family. Here it is shown with a Minerva Copper Fleck worktop, with a matching stainless steel sink module and a breakfast bar, meaning it's as easy on the eye as it is flexible. Our new matt black handles add a lovely contrast to the pale oak doors.





## SHAKER

### CREAM

America's Shaker community came up with this style in the 18th Century. To give it a bit of a modern makeover we've given you the option of soft curves. We think it's a kitchen that looks the part, in both traditional and contemporary homes. Features like solid timber worktops and big Belfast sinks really add to the feeling of handmade quality when used with this range.

#### CABINET OPTIONS







uniquely



## DUNHAM

### MIDNIGHT

This Shaker is striking in every detail; from its bold, matt-painted blue doors to its pure white Minerva Carrara worktop. The oak effect open shelving, plate rack and Belfast sink add a traditional edge but with a few simple tweaks, its style would suit the most contemporary home equally well. The clever addition of Dunham Dove grey wall units helps balance this kitchen out perfectly.

#### CABINET OPTIONS



PREMIUM ID<sup>3</sup>



FACTORY  
ASSEMBLED





uniquely







# DUNHAM

## SKY

With its shaker style and its unique light blue colour, the Dunham Sky pushes traditional kitchen design as far as it will go. For those seeking a bolder look, the Dunham Sky can be integrated with similar colours for a tone-rich room, or alternatively, it can be put with minimal furniture and a muted palette to help it sit where it belongs – centre stage.

### CABINET OPTIONS



PREMIUM iD³



FACTORY  
ASSEMBLED

uniquely

## DUNHAM

### GREY

Create an effortless statement with Dunham Grey's bold colour and contemporary shaker doors. Mixing style and pragmatism, the Dunham is shown here with a Nebraska Oak end panel bookshelf to house kitchen essentials in the most elegant way possible, whereas the Ice Chips Quartz worktop oozes class. Perfect if you want the industrial look without compromising on luxury.

#### CABINET OPTIONS



PREMIUM iD³



FACTORY  
ASSEMBLED





uniquely



#### CABINET OPTIONS



PREMIUM id³



FACTORY  
ASSEMBLED





## DUNHAM

### DOVE GREY

This soft grey, painted Shaker kitchen brings the promise of serenity to even the busiest of family kitchens, especially with the inclusion of natural, solid oak worktops and oak effect shelving. It's a style at home in both contemporary and traditional surroundings and one you can make your own by mixing the grey with other colours in the range.

## DUNHAM

### WHITE

With its clean lines, curved edges and sleek handles, the Dunham manages to be both memorable and low-key. Pair it with a Dark Wenge timber worktop and heavy furnishings for a timeless, cosy effect, or with subway tiles and magnolia walls for a really bright, simple look.



#### CABINET OPTIONS



PREMIUM id³



FACTORY  
ASSEMBLED







#### CABINET OPTIONS



**SIMPLY READY  
TO ASSEMBLE**



**FACTORY  
ASSEMBLED**





## WINCHESTER

### BLUE

The Winchester Blue with its green blue grained painted effect shaker doors is a minimalistic masterpiece without trying too hard. This uncluttered space uses the Minerva Carrara White worktop and stainless steel Belfast sink to stand out from the crowd and create a retro feel.



## WINCHESTER

### ACACIA

The light timber effect of this Shaker style kitchen instantly creates a beautifully crisp and clean interior. One which is complemented further with the addition of a glossy Grey Marble laminate worktop and a walk in, pantry style, corner larder. The Winchester Acacia can also be combined with Winchester Cream, Blue or Grey to stunning effect.

#### CABINET OPTIONS



**SIMPLY READY  
TO ASSEMBLE**



**FACTORY  
ASSEMBLED**











# WINCHESTER

## CREAM

This is a stylish twist on a very popular theme. The Shaker style doors and wood grain effect provide traditional charm, while the sleek cream finish and curved D handles give a contemporary edge. The look is completed with mid walnut laminate worktops.

### CABINET OPTIONS



**SIMPLY READY  
TO ASSEMBLE**



**FACTORY  
ASSEMBLED**







## WINCHESTER

### GREY

Combining traditional wood grain effect shaker doors with an industrial mid grey palette, the Winchester Grey is the perfect intersection between traditional and contemporary. The oak timber worktop nods to the spacious country kitchen, whereas the Belfast stainless steel sink represents a modern take on a traditional aesthetic that wouldn't be out of place in a city apartment.

#### CABINET OPTIONS



**SIMPLY READY  
TO ASSEMBLE**



**FACTORY  
ASSEMBLED**

# LEIGHTON

## GLOSS WHITE

Drawing its inspiration from classic Shaker simplicity, Leighton Gloss White cleverly mixes traditional design with contemporary soft curves. Corian Sagebrush worktops provide a striking contrast against crisp, white panels. The sleek, gloss finish is complemented by steel handles.



### CABINET OPTIONS



**SIMPLY READY  
TO ASSEMBLE**



**FACTORY  
ASSEMBLED**











## LEIGHTON

GREY

We've brought the traditional Shaker kitchen bang up to date, by giving it a sophisticated matt grey finish that works so well with the solid wood worktops. What you get is a best of both worlds look that combines the traditional with the contemporary.

### CABINET OPTIONS



**SIMPLY READY  
TO ASSEMBLE**



**FACTORY  
ASSEMBLED**



#### CABINET OPTIONS



**SIMPLY READY  
TO ASSEMBLE**



**FACTORY  
ASSEMBLED**





## TATTON

### OAK

The natural warmth of oak creates a style that's at once both homely and high quality. Even-width vertical and horizontal rails give the Shaker doors a sharper look, emphasised by vertical graining. Making the whole kitchen as practical and easy to use as it is beautiful, are mid height side-by-side appliance housings and plenty of excellent storage space.

# TATTON

## CREAM

This cream Shaker design is a real classic. The glazed wall units provide a stylish addition, while the stainless steel handles and Nebraska Oak laminate worktop provide elegance and contrast. A modern take it may be, but this kitchen looks just as good in a traditional setting.



### CABINET OPTIONS



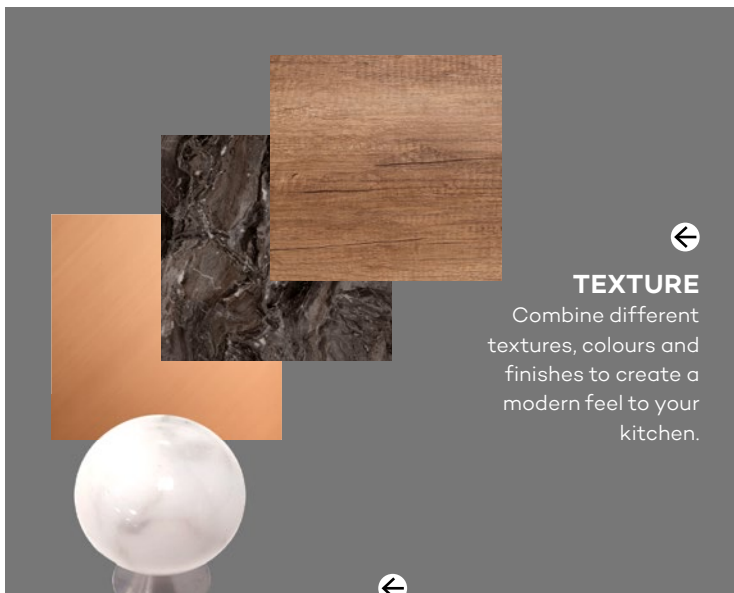
**SIMPLY READY  
TO ASSEMBLE**



**FACTORY  
ASSEMBLED**







## TEXTURE

Combine different textures, colours and finishes to create a modern feel to your kitchen.



## MARBLE

The beautiful stone has been a huge hit in the last couple of years and can add a little modern luxury to a kitchen, with knobs or worktops. To achieve the look without the cost of stone marble try Minerva or a high-definition laminate worktop.

Page 134

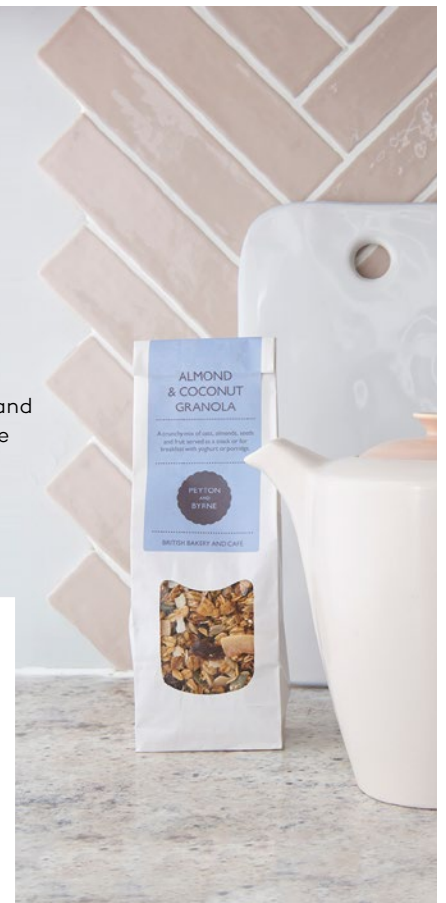
# MODERN

A blend of materials, shapes and scale, Modern kitchens combine patterns and textures for a sleeker look.

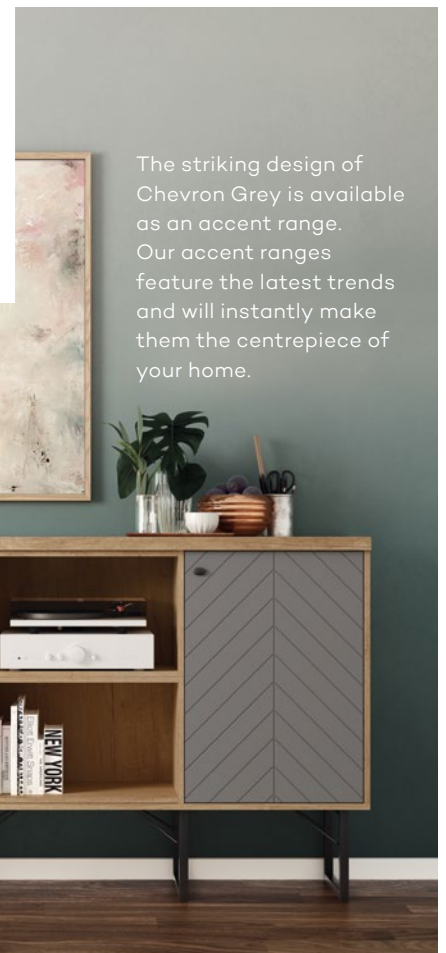
Our Fusion White boasts a super high-gloss finish and two-tone edges paired with a solid wood worktop. If Modern is the look for you, keep browsing to find your perfect style and colour.

## HERRINGBONE & CHEVRON

Whether it's tiles, wood floors or cabinet fronts, geometric Herringbone and Chevron patterns are the hottest trend around.



Integra Meteor Grey. Page 68



The striking design of Chevron Grey is available as an accent range. Our accent ranges feature the latest trends and will instantly make them the centrepiece of your home.





Studio White. Page 94



CONTENTS

**INTEGRA FUSION** ..... 58  
– Champagne, Cream, White, Blue

**INTEGRA METEOR** ..... 66  
– Cashmere, Grey, Light Grey, Blue

**INTEGRA ALPINE** ..... 74  
– Graphite, Oak

**FUSION** ..... 78  
– Champagne, White, Cream, Blue

**PLANAR** ..... 86  
– Grey, White, Cream

**STUDIO** ..... 92  
– Grey, White, Cream

**LUNA** ..... 98  
– Matt Grey, Cashmere, White, Cream

**METEOR** ..... 106  
– Grey, Light Grey, Cashmere, Blue

**ALPINE** ..... 114  
– Graphite, Oak

**NOVA** ..... 118  
– Matt Grey, Cashmere, White, Cream

uniquely







# INTEGRA FUSION

## CHAMPAGNE

Integra Fusion Champagne elegantly creates the epitome of simplicity with its handle-free metallic Champagne slab doors and duo tone silver edging. This is complemented by the striking warmth of Studio Berry accent units and finished off with a Lava Rock Corian worktop.

### CABINET OPTIONS



PREMIUM iD³



FACTORY  
ASSEMBLED

uniquely

## INTEGRA FUSION

### CREAM

We think this smooth, handle-free kitchen looks great in a glossy cream finish. The big island unit makes a great feature and offers lots of storage space, as well as an extra worktop area. Features Engineered Oak 3 Strip Flooring. Ask your designer for more details about our flooring range.

#### CABINET OPTIONS



PREMIUM iD<sup>3</sup>



FACTORY  
ASSEMBLED





uniquely







## INTEGRA FUSION

### WHITE

There's plenty of clever design packed into this kitchen. And handle-free cabinets and drawers keep it looking slick and modern, with a totally smooth appearance. A subtle silver trim on the edges of cabinets adds contrast between the doors and drawers.

#### CABINET OPTIONS



PREMIUM iD<sup>3</sup>



FACTORY  
ASSEMBLED

uniquely



## INTEGRA FUSION

BLUE

The fuss free handleless signature of our Integra kitchens combines with the durable, high gloss metallic finish of Fusion Blue to bring you a minimalist look with plenty of impact. Crisp and contemporary, with a sleek linear design that gives your kitchen a fluid, flowing feel throughout.

CABINET OPTIONS



PREMIUM iD<sup>3</sup>



FACTORY  
ASSEMBLED







uniquely

## INTEGRA METEOR

### CASHMERE

Another member of the Integra Meteor family – this time with a matt cashmere finish. It's the perfect balance of function and fashion with the design unbroken by handles. Shown here with the clean, minimal White Cap Corian worktop.





CABINET OPTIONS



PREMIUM iD³



FACTORY  
ASSEMBLED

uniquely

## INTEGRA METEOR

GREY

Our matt grey version of the Integra Meteor range is perhaps the most versatile of them all. Shown here featuring a Juniper Corian worktop making it subtle, yet classy, and the perfect place to enjoy drinks with friends.

CABINET OPTIONS



PREMIUM iD³



FACTORY  
ASSEMBLED





uniquely



CABINET OPTIONS



PREMIUM iD³



FACTORY  
ASSEMBLED





## INTEGRA METEOR

### LIGHT GREY

Featuring the Veined Slate laminate worktops, the Integra Meteor Light Grey oozes timeless elegance. As well as boasting a style which promises to stay in fashion, it provides the freedom to experiment – making it the perfect partner for those who like to add a bit of adventure to their cooking.

uniquely







# INTEGRA METEOR

## BLUE

With Integra Meteor Blue, retro meets forward thinking. Its matt blue finish is seamless thanks to the handleless design, creating a bright and open space for the whole family. It may look modern, but it looks just as striking in a traditional setting too. Shown here with rustic Nebraska Blonde worktops.

### CABINET OPTIONS



PREMIUM iD³



FACTORY  
ASSEMBLED



uniquely

## INTEGRA ALPINE

### GRAPHITE

This is the choice for you if you want a fantastic family kitchen without sacrificing on designer looks. The textured wood grain effect doors give a feeling of warmth and without a handle in sight it's not only fuss free but also ultra sleek. We think an Alaska compact laminate worktop is the ideal choice to add a crisp fresh feel.





CABINET OPTIONS



PREMIUM ID³



FACTORY  
ASSEMBLED

## INTEGRA ALPINE

### OAK

We've dropped the handles from this kitchen to keep it fuss free and refreshingly simple. The textured horizontal grain adds to this too, helping everything to flow nice and smoothly. And because the lighter grain is so versatile, you can match it with neutral colours or mix it with bold shades for a look that's all your own.



#### CABINET OPTIONS



PREMIUM iD<sup>3</sup>



FACTORY  
ASSEMBLED





uniquely

## FUSION

### CHAMPAGNE

A stunning fusion of chic metallic Champagne slab doors and striking duo tone silver edging makes this kitchen a true showstopper. Pair with Alpine Graphite square edge worktops and end panels, as shown here, to complete this celebration of style and sophistication.

#### CABINET OPTIONS



PREMIUM iD<sup>3</sup>



FACTORY  
ASSEMBLED





uniquely

SHOPPING

BREAD

MILK

FRUIT

PROSECCO

DOG FOOD!







# FUSION

## WHITE

A simple but stunning contemporary kitchen that demands attention, with its super high gloss finish and premium two-tone edging. The doors are bold, bright and very on-trend, and their neutral tone and clean styling gives you the freedom to mix them with different textures and a versatile palette of colours. Here we've teamed the cabinets with walnut worktops to great effect.



### CABINET OPTIONS



PREMIUM ID³



FACTORY  
ASSEMBLED

uniquely

## FUSION

### CREAM

Fusion in a cream finish offers a more neutral colour on which you can create your kitchen design. The cream cabinet doors with their contrasting pear coloured trim add a little more stand-out. And then put your personal spin on it through your choice of handles, sinks and taps.

#### CABINET OPTIONS



PREMIUM iD<sup>3</sup>



FACTORY  
ASSEMBLED









uniquely

## FUSION

### BLUE

This modern kitchen has a high gloss pale blue finish. It makes for a bright and open kitchen, but the surface is also really durable. All the cabinet doors feature a contrasting colour trim that add a touch of style to the overall design. And you can even do the same with all the end panels by opting for a contrasting pear finish. Accessories like chrome arrow shaped handles can help you create a retro feel too.





CABINET OPTIONS



PREMIUM ID³



FACTORY  
ASSEMBLED



## PLANAR

### GREY

This latest addition to our popular Planar family of kitchens continues the successful formula of minimal design with maximum appeal. Integrated, almost invisible handles keep the lines smooth and clean, whilst the light grey gloss finish adds a stylish sheen. A real highlight of the design shown here is the useful corner larder unit, which offers ample storage space for your day-to-day groceries and ingredients.



#### CABINET OPTIONS



PREMIUM iD³



FACTORY  
ASSEMBLED





uniquely







# PLANAR

## WHITE

The bright white finish of this design has a bit more stand-out. But of course it's still got the minimal design and the soft curves that make this style so popular. Pictured here with black worktops, you can create plenty of contrast against the high-gloss cabinets.



### CABINET OPTIONS



PREMIUM iD³



FACTORY  
ASSEMBLED

uniquely

## PLANAR

### CREAM

The lovely curved end units are the first thing that jump out on this glossy cream kitchen. It makes for a very soft and modern feel.

We like the way the integrated handle design gives more emphasis and angles to the units, and keeps the uncluttered look at the same time. Solid oak worktops wrap around the floor units and give plenty of practical workspace, as well as just looking great.



#### CABINET OPTIONS



PREMIUM iD<sup>3</sup>



FACTORY  
ASSEMBLED







uniquely







# STUDIO

## GREY

Another member of the Studio family, but this time bringing a pale grey gloss finish to accentuate the on-trend minimalism. Nebraska Oak worktops and end panels add even more stand-out to a simple but striking design that you can accessorise with flair and freedom.

### CABINET OPTIONS



PREMIUM iD³



FACTORY  
ASSEMBLED



## STUDIO

### WHITE WITH VISTA UNITS

This is a simple but attractive design. The glossy finish of the units can work perfectly alongside contrasting laminate worktops. Try something like stainless steel sinks and taps matched up with straight aluminium lip handles as an easy and effective way to continue the minimal look.

#### CABINET OPTIONS



PREMIUM iD<sup>3</sup>



FACTORY  
ASSEMBLED







uniquely

## STUDIO

### CREAM

The glossy finish of this kitchen is perfectly balanced by the soft cream colour. The curved units give a really modern feel and you can match that up with simple linear handles and solid wood worktops. You can make this more angular if you like, with non-curved units; we think it's cool either way.





CABINET OPTIONS



PREMIUM ID³



FACTORY  
ASSEMBLED



# LUNA

## MATT GREY

This matt light grey kitchen is an oasis of calm with integrated door handles adding to the feeling of serenity by creating an uncluttered look. Caldeira compact laminate worktops contrast and complement beautifully with their dark organic finish. The centrepiece here is the island unit featuring an oak breakfast bar and conversation-starting Elica white seashell hood.

### CABINET OPTIONS



**SIMPLY READY  
TO ASSEMBLE**



**FACTORY  
ASSEMBLED**











# LUNA

## CASHMERE

Retro meets forward thinking in this bold member of the Cashmere family. The curved doors in combination with the handleless cabinets make this kitchen's sleek units feel like they go on forever, whereas the hearty oak worktops bring this Luna line up back down to earth. Features Amtico Ceramic Frost Stone flooring.

### CABINET OPTIONS



**SIMPLY READY  
TO ASSEMBLE**



**FACTORY  
ASSEMBLED**



## LUNA

### WHITE

A neatly stylish, super value design with appealing urban undertones. The clean lines of the handleless cabinets give it a refreshingly uncluttered look, whilst the oak-effect open shelves with downlighters let you create eye catching display areas that will add real individuality to your kitchen.





CABINET OPTIONS



**SIMPLY READY  
TO ASSEMBLE**



**FACTORY  
READY ASSEMBLED**

# LUNA

## CREAM

A stunning combination of high gloss cream and an ultra-smooth 'no handles' design, gives you a streamlined look with lots of stand-out. Tone down the city slicker feel with a touch of timber and add a dash of country cottage styling to the mix.



### CABINET OPTIONS



**SIMPLY READY  
TO ASSEMBLE**



**FACTORY  
ASSEMBLED**







#### CABINET OPTIONS



**SIMPLY READY  
TO ASSEMBLE**



**FACTORY  
ASSEMBLED**





## METEOR

### GREY

The Meteor Grey design combines two of the most fashionable trends in kitchens right now – a grey colour and a matt base, to create something that's instantly calming, goes with anything and oozes cool. Pair with a Hickory worktop for a soft effect that gives the impression of more space.







# METEOR

## LIGHT GREY

A Meteor Light Grey design is perfect for the person who wants their kitchen to last, but also wants it to complement contemporary accessories. The Mountain Lodge laminate worktop creates a timeless effect, whereas the matt finish nods to a modern-day trend for industrialism. The subway tiles take this industrial trend even further, and creates a focal point out of a splash back.

### CABINET OPTIONS



**SIMPLY READY  
TO ASSEMBLE**



**FACTORY  
ASSEMBLED**



## METEOR

### CASHMERE

Like all of the Meteor designs, the Cashmere features stunning matt cabinet doors and bold edges that ensure it'll be noticed, but unlike its contemporaries, the Cashmere's cream coating means that it will sit in perfect harmony with almost any interior design. Ideal for a smaller kitchen that needs a little lift.





#### CABINET OPTIONS



**SIMPLY READY  
TO ASSEMBLE**



**FACTORY  
ASSEMBLED**

# METEOR

## BLUE

The light blue matt slab doors of the Meteor range offer a stylish kitchen that promises to stay in fashion. The cabinets can be accessorised with light pastel colours that give it a feminine finish, or hardened with darker walls and industrial decor. Completing the modern look, this kitchen is finished with Hickory laminate worktops.



### CABINET OPTIONS



**SIMPLY READY  
TO ASSEMBLE**



**FACTORY  
ASSEMBLED**











## ALPINE

### GRAPHITE

The charm of textured wood grain effect doors create a stunning kitchen with timeless elegance. Reflecting this in all its glory is a Deco Glaze bronze mirror splashback, while making an equally striking addition is a Max-Top Diamond White worktop that lights up the room as it draws the eye to the island unit.

#### CABINET OPTIONS



**SIMPLY READY  
TO ASSEMBLE**



**FACTORY  
ASSEMBLED**







## ALPINE

### OAK

The light coloured grain effect on this kitchen gives you that retro look, without trying too hard. You can have loads of fun teaming it with bright furniture and quirky accessories. We know you'll love the simplicity and the freedom to experiment.

#### CABINET OPTIONS



**SIMPLY READY  
TO ASSEMBLE**



**FACTORY  
ASSEMBLED**



## NOVA

### MATT GREY

Step into sophistication with this simple yet stylish look. A super matt light grey finish complimented by white Minerva worktops creates a soothing ambiance that stands out without shouting. The Alpine Graphite open shelving allows you to display personal treasures and complete a kitchen that will stay fashionable year in, year out.







#### CABINET OPTIONS



**SIMPLY READY  
TO ASSEMBLE**



**FACTORY  
ASSEMBLED**



## NOVA

### CASHMERE

Our Cashmere kitchens are as luxurious as they sound. With a slab door and high-gloss finish, this kitchen stands firmly at the forefront of modern design. This kitchen isn't just about looks though with its Max-Top worktops, sliding doors and built-in wine cooler, the Nova Cashmere's beauty lies as much in its functionality as in anything else.

#### CABINET OPTIONS



**SIMPLY READY  
TO ASSEMBLE**



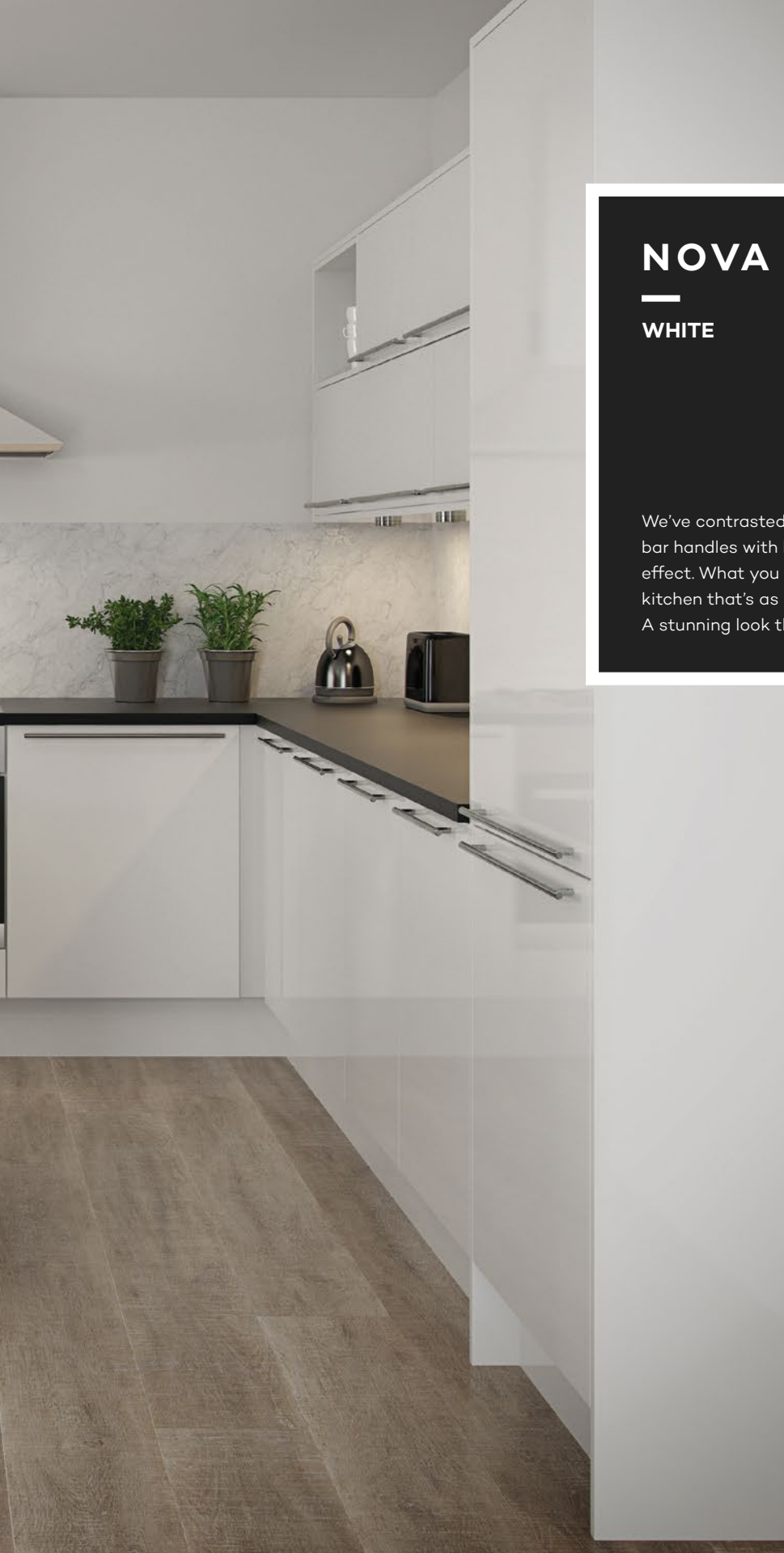
**FACTORY  
ASSEMBLED**











# NOVA

WHITE

We've contrasted pristine white units and sleek bar handles with bold, black worktops, to great effect. What you get is a gleaming, high gloss kitchen that's as affordable as it is adorable. A stunning look that's at home in any setting.

## CABINET OPTIONS



**SIMPLY READY  
TO ASSEMBLE**



**FACTORY  
ASSEMBLED**







# NOVA

## CREAM

Simple and uncluttered styling is perfectly complemented by the warmth of the cream gloss finish to bring you a design that's smart and practical, yet great looking too. A kitchen that's easy on the eye and fits neatly into your lifestyle.

### CABINET OPTIONS



**SIMPLY READY  
TO ASSEMBLE**



**FACTORY  
ASSEMBLED**



Winchester Blue. Page 40



## STEP 2 CHOOSE YOUR CABINET



Every customer has different requirements and budgets when choosing a kitchen. To ensure we can meet your needs as closely as possible, we have three cabinet options for you to choose from. You will have already selected a favourite style and colour from our range of traditional and modern kitchens, now you just need to decide on the cabinet option that's right for you.



**SIMPLY READY TO ASSEMBLE**



**FACTORY ASSEMBLED**



**PREMIUM id³**



- 15 year cabinet guarantee
- 16mm thick cabinet
- Supplied ready to assemble for easy transport and storage
- Blum clip on hinges and drawer runners
- Soft close as standard
- Available in white with matched edging



- 20 year cabinet guarantee
- 18mm thick cabinet
- Fully assembled in our factory for strength and easy installation
- Blum clip on hinges and drawer runners
- Soft close as standard
- Available in white with silver edging or oak



- Lifetime cabinet guarantee
- 18mm thick cabinet
- Fully assembled in our factory for strength and easy installation
- Next generation integrated Blum soft close hinges
- Superior strength back panel
- Rechargeable & repositionable lighting
- Available in stylish grey exclusively with our Uniquely kitchens



### STEP 3 ACCESSORISE YOUR SPACE

Add the finishing touches to your kitchen from a wide range of worktops, handles and storage solutions.







## CONTENTS

---

<b>WORKTOPS</b> .....	<b>130</b>
– Corian, Granite, Quartz, Solid Wood, Minerva, Max-Top, Compact	
<b>LAMINATE WORKTOPS</b> .....	<b>136</b>
– Dark, Wood, Light, Grey	
<b>SPLASHBACKS &amp; UPSTANDS</b> .....	<b>139</b>
– Standard Glass, Decocolour, Decoglaze	
<b>HANDLES</b> .....	<b>140</b>
<b>STORAGE SOLUTIONS</b> .....	<b>142</b>
– Tall Units, Drawers, Wall Units	
<b>KITCHEN ESSENTIALS</b> .....	<b>148</b>
– Decorative Fittings, Wastes, Recycling, Bins	

## WORKTOPS

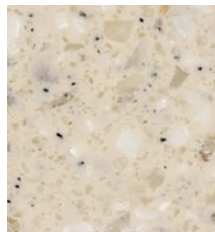
### Worktops are an important part of the kitchen

Your worktop will take up a large part of your kitchen space, so it's important that it works with your chosen design. We've got lots of colours and materials to choose from, so have a look through the following pages and see what your favourite is.

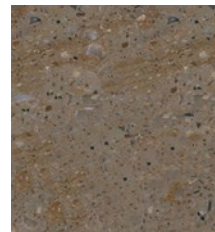
### CORIAN

The original solid surface material for kitchen worktops and still very popular. Can be cut to fit almost any shape, providing a seamless finish and endless design possibilities.

- Available in a huge choice of over 70 colourways.
- Excellent durability and stain and water resistance.
- Solid, non-porous and very easy to clean and maintain.
- Options for a built in drainer and integrated splashback in any height.
- 10 year limited manufacturer's warranty.



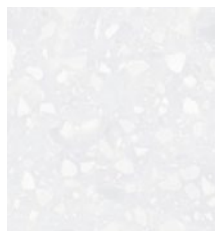
**FOSSIL**



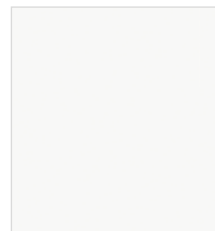
**SONORA**



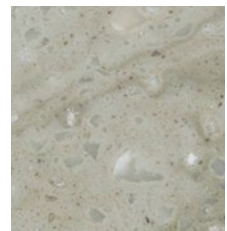
**BLACK QUARTZ**



**ANTARCTICA**



**GLACIER WHITE**



**SAGEBRUSH**



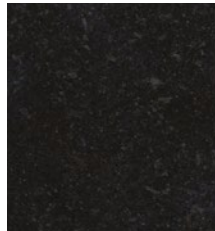


The ultimate and most luxurious worktop surface you can choose.

## GRANITE

Granite adds value to your kitchen and home and makes both more desirable. And because it's a natural material the pattern of every single worktop is unique.

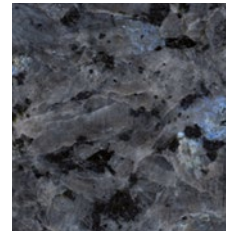
- One of the most durable materials on earth only diamond is harder.
- Resistant to heat, water, scratching and staining.
- High gloss finish that's very easy to clean and maintain.
- Available in 12 different colours to match every décor scheme.
- 10 year limited manufacturer's warranty.



**JET BLACK**



**BALTIC BROWN**



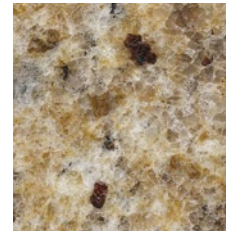
**BLUE PEARL**



**NERO IMPALA**



**STAR GALAXY**



**VENETIAN GOLD**



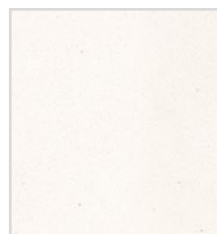
**UBA TUBA**



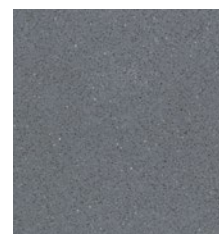
**BIANCO SARDO**



**ICE CHIPS**



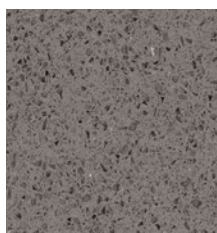
**BONE WHITE**



**CONCRETE**



**CREAM SPARKLE**



**GREY SPARKLE**

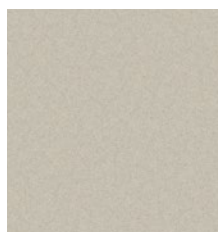


**BLACK SPARKLE**

## QUARTZ

A natural and durable worktop material with similar qualities to granite. Elegant and sophisticated but extremely practical and resilient, so it's non-porous, scratch resistant and easy to clean and care for.

- Available in a unique range of subtle shades, effects and hues.
- Uniform in colour and pattern - in a high gloss or honed finish.
- Naturally resistant to mould, bacteria and mildew.
- 10 year limited manufacturer's warranty.



**KARAMEL**



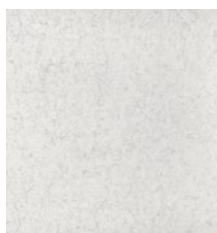
**ALUMINIUM NUBE**



**SIMPLY BLACK**



**WHITE SOUTH**



**WHITE LAKE**



**WHITE SPARKLE**





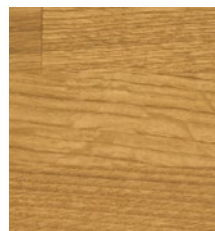
Shown here with Oak

## SOLID WOOD

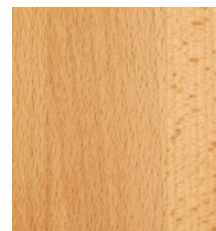
- All solid wood worktops are a generous 40mm thick.
- Available in standard lengths.
- Available in solid oak, beech and walnut.
- A good choice if you want to add a feeling of warmth to your kitchen.
- Durable and resistant to wear and discolouration.
- Supplied with protective sealing oil and simple care instructions to ensure long wear and lasting beauty.
- Real wood has warmth, texture and individual characteristics. Distinctive colour and grain patterns confirm the authenticity of wood. Choosing real wood means that your kitchen is natural, beautiful and completely unique.



**WALNUT**



**OAK**

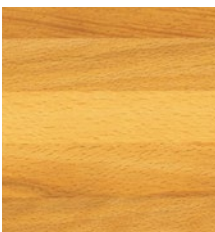


**BEECH**

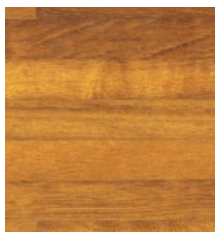
## BESPOKE SOLID WOOD

Wood and timber kitchen work surfaces have never been more popular and there are plenty of reasons why. They work great in both modern and traditional designs, bringing warmth, charm, texture and authentic natural beauty to any setting and can be cut to any shape required.

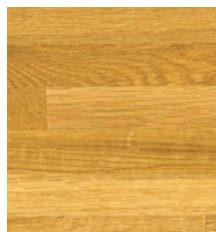
- Bespoke size and thickness for your design requirements.
- Distinctive colour and grain patterns, each one unique in itself.
- Available in solid oak, beech and walnut in 6 subtly different finishes.
- Durable and resistant to wear and discolouration.
- Supplied with protective sealing oil for long wear and lasting good looks.



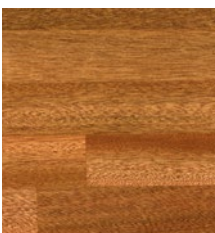
**BEECH**



**IROKO**



**OAK**



**SAPELLI**



**WALNUT**



**WENGE**

## MINERVA

A practical and solid work surface manufactured using state-of-the-art technology to deliver a luxurious appearance with robust performance day in, day out.

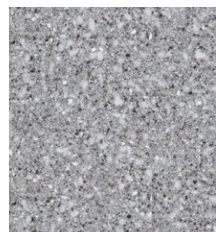
- No specialist installation required.
- Comes with a 10 year guarantee.
- Doesn't require any specialist cleaning regimes – just wipe clean.
- Not porous unlike granite, so resists most household chemicals and minor scratches are easily repaired.
- Cool to the touch with a silky smooth finish.
- Seamless imperceptible joins and a range of modular options for design flexibility.



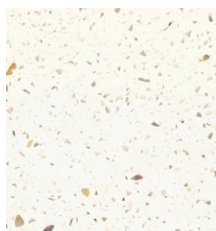
**CARRARA WHITE**



**AMAZONIAN BROWN**



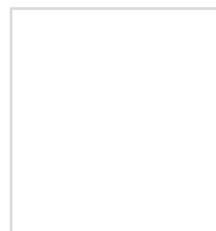
**PEAK STONE**



**COPPER FLECK**



**ICE CRYSTAL**



**SYLMAR WHITE**



QUARTZ MADE SIMPLE

## MAX-TOP

- All the desirability of quartz for less cost.
- Stunning finish in three top-selling colours.
- Lightweight and durable watertight surface.
- No need for specialist fitters.



**BLACK ONYX**



**WARM GREY**



**DIAMOND WHITE**





Shown here with Alaska

The next generation in worktop design – ultra-sleek, versatile and high performing!



**ALASKA**

## COMPACT WORKTOPS

The next generation in worktop design – ultra sleek, versatile and high performing! These cutting edge compact worktops provide complete flexibility in design and are the new unique alternative to natural stone.

- High contemporary at just 12.5mm thin.
- Feature a stylish solid black core that is 100% waterproof.
- Double sided laminate decorative surface gives the ability to achieve breakfast bar waterfall sides and opening shelving.
- Superior performance characteristics against heat, wear and impact.
- Can be curved and installed on site with no specialist tooling.
- 3 distinctive surface designs and textures.



**CALDEIRA**



**LAVE**

## LAMINATE WORKTOPS

Magnet can show you a wide range of laminate worktops that offer a lower cost alternative to natural work surfaces. If you have a budget to work to, our practical and hardwearing laminates can help you get the look you want at the price you want to pay.

- Available in a variety of colour options to suit every taste.
- A choice of 'natural' finishes, including granite, marble and timber.
- Water and stain resistant.

### DARK



**EVEREST**  
(Matt)



**BLACK MARBLE**  
(Matt)



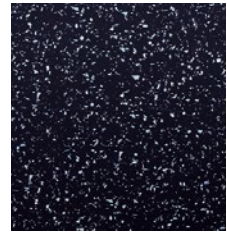
**ANDORRA**  
(Gloss)



**EVEREST GLOSS**  
(Gloss)



**JAMOCHA**  
(Gloss)



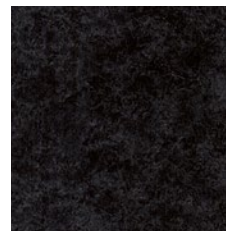
**STRASS NOIR**  
(Gloss)



**MIDNIGHT  
GRANITE** (Gloss)



**CERAMIC  
ANTHRACITE**  
(Textured)



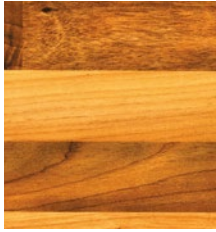
**LUNAR NIGHT**  
(Textured)





Shown here with Nebraska Oak

## WOOD



**MID WALNUT**  
(Matt)



**ALPINE GRAPHITE**  
(Textured)



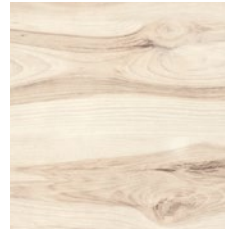
**NEBRASKA OAK**



**COLMAR OAK**  
(Textured)



**DARK BUTCHERS  
BLOCK**  
(Textured)



**HICKORY**  
(Textured)

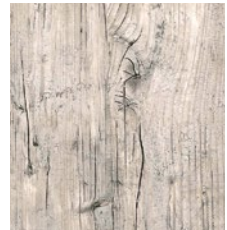
A wide range of laminate worktops that offer a lower cost alternative to natural work surfaces.



**MOUNTAIN LODGE**  
(Textured)



**NEBRASKA  
BLONDE** (Textured)



**CAPITOL PINE**  
(Textured)

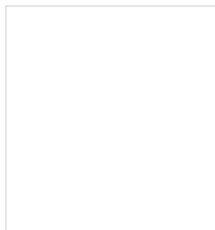
## LIGHT



**TAURUS BEIGE**  
(Matt)



**MADURA PEARL**  
(Textured)



**WHITE GLASS**  
(Gloss)



**FINERY**  
(Textured)



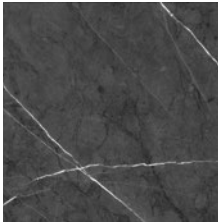
**WHITE MARBLE**  
(Matt)

## LAMINATE SPLASHBACKS & UPSTANDS

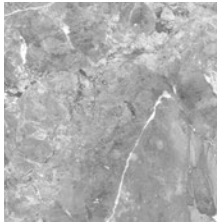
Perfect if you want a splashback or upstand that's hygienic and easy to clean. Laminate provides great alternative to tiles. Our price guide has a full list of colours.

Laminate splashbacks should not be used with hobs.

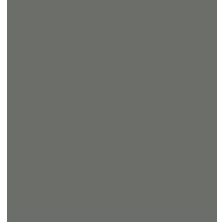
### GREY



**VEINED SLATE**



**GREY MARBLE**  
(Textured)



**SUPERMATT GREY  
CONCRETE**



**ARGENT**  
(Matt)



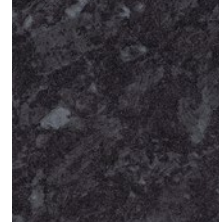
**EMPIRE SLATE**  
(Textured)



**GREY TERRAZZO**



**CONCRETE**



**EVEREST**  
(Available in gloss  
or matt)



**ANDORRA**  
(Gloss)



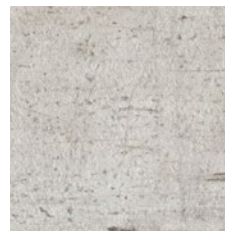
**JAMOCHA**  
(Gloss)



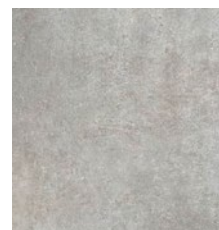
**LUNAR NIGHT**  
(Textured)



**WINTER  
CARNIVAL**  
(Textured)



**FINERY**  
(Textured)



**EMPIRE SLATE**  
(Matt)



**ALPINE GRAPHITE**  
(Textured)



## SPLASHBACKS & UPSTANDS

### GLASS SPLASHBACKS & UPSTANDS

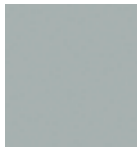
These easy to clean glass splashbacks and upstands fit behind your sink and hob and are available in almost any size and colour you need. There are three ranges to choose from, so you can go for the one that best suits your kitchen and budget.

#### STANDARD GLASS SPLASHBACKS

- Value option available in 5 colours from stock.
- Sizes 600 x 700 & 900 x 750mm.



**ARCTIC  
WHITE**



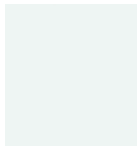
**PEWTER**



**EBONY**



**BISCUIT**



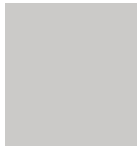
**BRIDE**



**OLIVE GREEN**



**VERMEER**



**DOVE GREY**



**AUBERGINE**

#### DECOCOLOUR

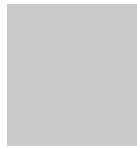
- Mid price-range, made to order in bespoke sizes.
- Available in 12 colours with unpainted edges.



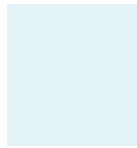
**ALMOND**



**CHARCOAL**



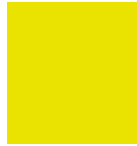
**FRENCH  
GREY**



**ICE**



**WHITE**



**ACID**



**SPLASH**



**OLIVE**



**CHERRY**



**AUBERGINE**



**BLACK**

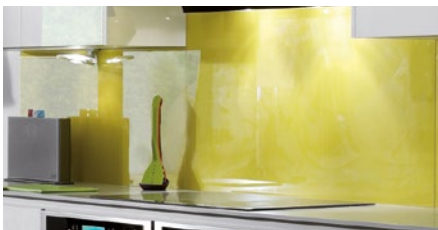


**ORANGE**

### DECO GLAZE™

#### Deco Glaze

- Premium quality, made to order in bespoke sizes.
- Available in 48 colours with painted edges.
- Metallic colours also available.



# HANDLES

It's surprising how much effect your choice of handles has on the look of your cabinets and the overall look of your kitchen. We've got over 50 different selections here.

You can match most handles with the majority of kitchens, but some are much better suited to certain styles and colours. Ask our designers for their recommendations if you're struggling to decide for yourself.

## The right handles make all the difference

### BAR HANDLES



CHROME ARROW HANDLE

30-31



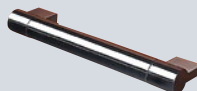
STANDARD BAR HANDLE

1-7



STEEL BAR HANDLE

8-9



CHUNKY BAR HANDLE

10-12



D HANDLE

13



SQUARE STEEL HANDLE

14-15



STAINLESS STEEL WIDE BAR HANDLE

16



CONTEMPORARY ANGLED 'D' HANDLE

17



CURVY CHROME 'C' HANDLE

18



STAINLESS STEEL/ WHITE D HANDLE

19



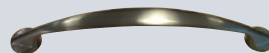
TUBE D-HANDLE

20



BOW HANDLE

23-24



STAINLESS STEEL C HANDLE

29



CHUNKY SQUARE BAR HANDLE

34-35



3 PIECE STAINLESS STEEL BAR HANDLE

36-37



CONTEMPORARY CURVED 'D' HANDLE

38-39



HAPTIC HANDLE

45



WAVY D HANDLE

49



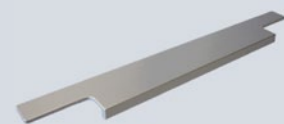
STAINLESS STRAP HANDLE

50



COPPER HANDLE

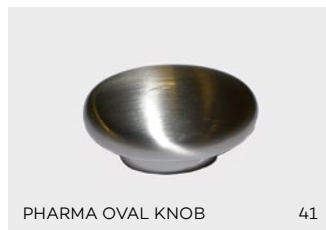
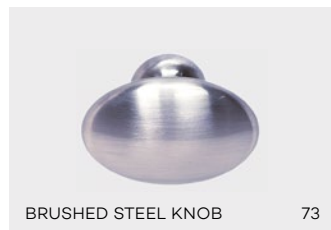
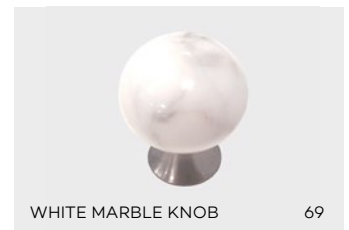
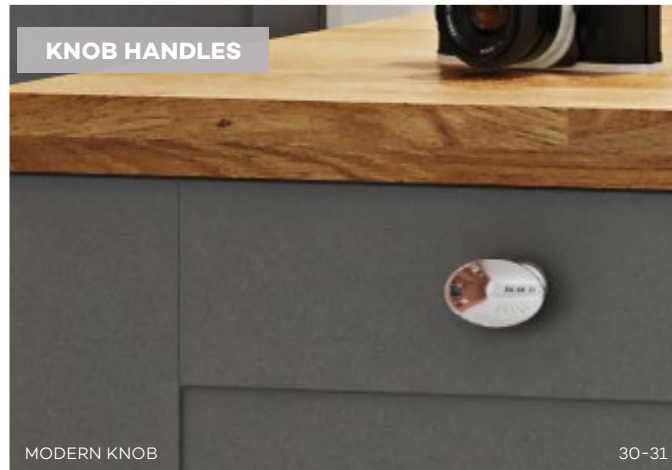
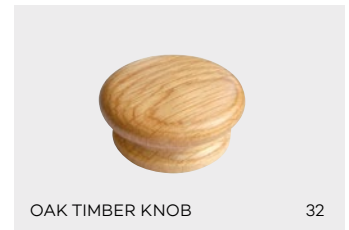
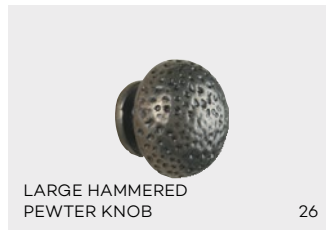
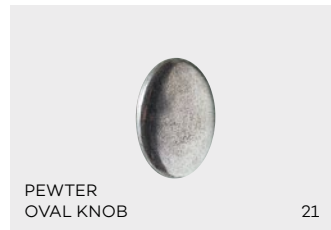
51



ALUMINIUM LIP HANDLE

53-58





## STORAGE SOLUTIONS





Our Innovations Plus products are all excellent in their own right, but working together alongside other great space saving ideas, they've helped our designers to create the perfect kitchen.

A more accessible one, with better use of space and a far more efficient layout. A kitchen that works with you and not against you.

- 1 Tall Larder** Floor to ceiling storage that makes great use of space.
- 2 3 Ring Cook Station** A single line of heat points providing extra worktop space.
- 3 Convenient Waste Bins** Quicker, easier waste disposal, that's also closer at hand.
- 4 Plinth Drawer** Extra storage neatly tucked out of sight under cabinets.
- 5 Plinth Ladder** Conveniently stored additional reach for high cabinets.
- 6 Instant Hot Water Tap** Why mess about with boiling water, when you don't need to?



**7 CabinetPlus**  
Making hard to reach items instantly more accessible.



**8 WorktopPlus**  
Roll out, roll back, extra space when it's needed.



**9 WallPlus/ShelfPlus**  
Organising and de-cluttering worktops.



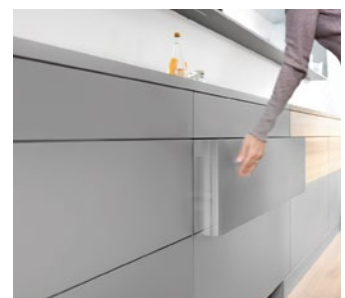
**SoundPlus**  
Comprises a stylish Sound Bar system that blends seamlessly into a run of wall cabinets and a Bluetooth Plinth Speaker set within the normally dead space at the base of your cabinets. Purpose-designed to fill your kitchen with superior sound.



reddot award 2015  
winner

**PushPlus**

Allows you to open your drawer at a mere touch. Available in selected ranges.



Sometimes it's the things you don't see which make the biggest difference to how well a kitchen works for you. We're all for practical kitchens, storage space and new technology and materials that make the best use of the space you have.



### 150/300 PULL-OUT

This pull-out storage unit has two wire shelves and is ideal for creating interest around a cooking station. Also available with double pull-out towel rail and storage basket. •150mm • 300mm.▲



### 150 TOWEL RAIL

Ideal for storing tea towels and cleaning products out of site.▲



### FULLY EXTENDABLE WIRE BASKETS

Consists of two fully extendable wire baskets, giving easy access to produce. • 300mm • 400mm • 500mm • 600mm



### TWIN CORNER

The latest innovation in corner storage. The twin corner has a smooth, sleek mechanism which allows effortless access to those hard to reach corners.▲



### TWO-TIER SINK PULL-OUT BASKET

Minimise clutter under the sink. This handy rack slides out for easy access.



### CORNER CAROUSEL

Makes corners fully accessible. The entire unit swings 360° to maximise space.

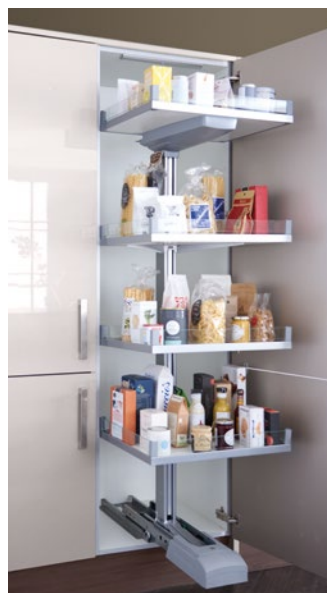


### SOFT-CLOSING PULL & SWING CORNER UNIT

An innovative use of door space. Wire baskets are pulled forward to provide easy access and more effective storage.▲



## TALL UNITS



### CONVOY LAVIDO LARDER UNIT

600mm larder with premium wirework.



### 500 TRADITIONAL LARDER

This stylish unit comes with lots of practical storage space. The unit includes a spice rack, wine rack, spice drawers, shallow timber drawer and a deep timber drawer.

### POCKET DOOR LARDER

1200mm wide larder unit including 2 pan drawers and open shelving. Available in Fusion only.



### 500 LARDER BLUMOTION

Internal drawer system contains four smooth-close drawers within a larder style unit.



### 300 PULL-OUT LARDER

This 300mm wide unit contains five easy access wire baskets, complete with smooth-close door action.▲



### 500 DISPENSER LARDER

For maximum storage, the 500 larder comes with 6 door shelves and pull-out wire baskets. Place two larders side by side for the ultimate storage unit.▲



### PREMIUM SOLID BASE

A premium solid base comes as standard on the pull out and dispenser larders. Available as a painted silver finish.

▲Supplied with premium solid base as standard. Painted Silver finish.

## DRAWERS



### ORGALINE PAN DRAWER DIVIDERS

Organise your crockery and pans with these useful dividers.



### BLUMOTION INTERNAL DRAWER SYSTEM

Generous internal drawers allow for effective use of space. This unit is ideally suited for use with drawer line base cabinet doors where a sleek, contemporary look is required.



### SHALLOW INTERNAL DRAWER UNIT

Maximise storage with a shallow internal drawer. (Not suitable for framed ranges or installation below a gas hob).



### DEEP PAN DRAWER UNIT WITH TOP SINK DRAWER

Maximise storage space beneath the sink with this ingenious and generous storage solution.



### PREMIUM OAK PEG BOARD

These deep drawers extend fully, offering easy access to space within the base units. Can be used for storage of pots and pans or even plates and dishes. Pack includes plate holder and pan divider • 800mm. Shown with glass drawer side upgrade.



### PLATE HOLDERS

Plate holder compatible with various deep pan drawer sizes.



### DELUXE GLASS UPGRADE PACK

Includes glass sides and Orgaline dividers.

- 400mm • 600mm
- 800mm • 1000mm



### SMART INTERIOR FOOD STORAGE



## WALL UNITS



### CabinetPlus

Ingeniously located shelves at the rear of cabinets that pull down with the aid of a motor, for instant access to your most frequently used kitchen tools.



### ShelfPlus

A line of shelves along the back of the worktop, designed to declutter your space whilst neatly storing and displaying anything you want them to.



### GLASS TAMBOUR UNIT

An attractive and practical easy access glass unit that keeps appliances neatly out of the way, until you're ready to use them.



### SLIDING WALL UNIT

These feature units will make a statement in any contemporary kitchen. Available in Purely slab ranges. Single door slides to display or hide contents.



### iMove

A really practical storage solution to help reach high up items in a wall unit. Available to fit 600 wide wall units, works with both standard and tall height units.

## KITCHEN ESSENTIALS



### USB CHARGING TRAY

A great solution for charging your smartphones and tablets. Available in 600mm, Oak.



### ANTI SLIP MAT

A simple mat that stops any items from moving around in your drawer. Available for all drawer widths.



### BASE UNIT LINER

Ideal for sink units and cupboards, this liner protects against damage and spillage.



### NARROW SILVER CUTLERY INSERT

330mm wide cutlery insert which is shallow enough to fit beneath a hob and versatile to work in a variety of different drawer widths whilst also allowing for space to store utensils. Shown here with anti-slip mat which is sold separately.



### STANDARD OAK CUTLERY INSERTS

Available in 400mm, 500mm 600mm, 800mm and 1000mm for standard ranges. 500mm, 600mm 800mm, and 1000mm in framed ranges. Available with optional knife block and spice insert.



### SILVER CUTLERY INSERT

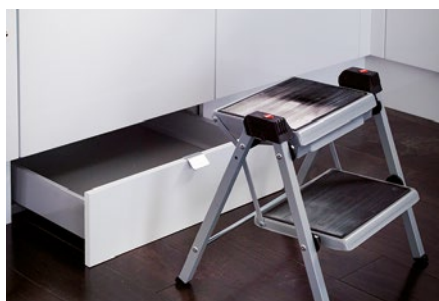
This smart cutlery holder is available as an optional extra. Optional knife block available.

• 400mm • 500mm • 600mm • 800mm  
• 1000mm



### PLINTH HEATER

This stainless steel plinth heater is neatly tucked out of sight and ideal for offering extra warmth.



### PLINTH LADDER

Conveniently stored additional reach for high cabinets.



### PLINTH DRAWER

Extra storage neatly tucked out of sight under cabinets.



## DECORATIVE FITTINGS & SAFETY FEATURES



### LOW TABLE BRACKETS

A handy way to create an extra table. Attach to back or side of units.



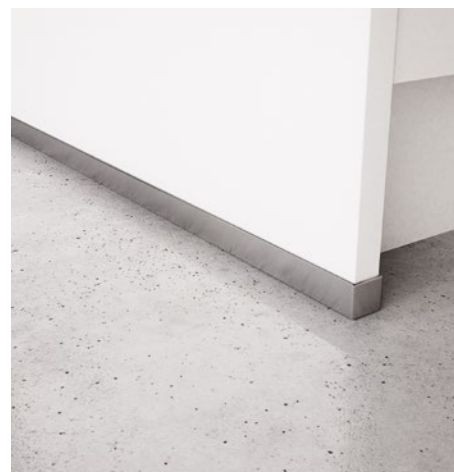
### COCKTAIL BAR BRACKETS

Extends beyond the back of your worktop to create a two-tiered effect.



### STAINLESS STEEL LEGS

A stylish way to create a breakfast bar or table. Available in chrome.



### END PANEL FEET

Brushed steel effect end panel feet, available in 1800mm. A simple but very stylish addition, which adds real impact and works with all our Astral and Integra Astral ranges.



### MIRRORED PLINTH

Mirrored plinth creates a wow feature in your kitchen and makes it look like it is floating. Available in 2.7m length and works with all current Magnet kitchens.



### SAFE FIX MAGNETIC SAFETY CATCH

## WASTE, RECYCLING & BINS



### 1 PART PULL-OUT BIN



### 2 PART PULL-OUT BIN

Separate waste with these compact pull-out bins.



### STAINLESS STEEL PIVOT BIN



### STAINLESS STEEL SLIM BIN

A compact bin that opens with the door.



### WESCO BIN

Smooth closing Wesco bin contains two waste containers. Available 500mm wide. Door line and drawer line options available.



### THREE-PART RECYCLING BIN

Makes easy work of sorting your rubbish prior to disposal.



### SMART CUBE

Convenient waste bins, close at hand when preparing food. Sizes available to fit in 400, 600 and 800mm wide pan drawers.



### HANDY COLLECTOR

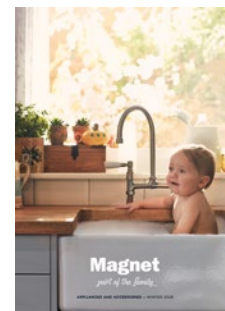
Flexible waste bins to store and transport waste. Supplied in pairs. Fits in pan drawers 400mm wide and upwards.



## STEP 4 CHOOSE YOUR APPLIANCES, SINK AND TAPS



Of course, great design doesn't end with beautiful cabinets and worktops. From stylish sinks and taps to gorgeous lighting and top-of-the-range ovens, we have a huge selection from the world's leading brands. See our Appliances and Accessories brochure for the full range of products.



**These are some of the major brand names  
you'll find in our Magnet showrooms:**

**AEG**

ASTRACAST



elica  
with fluvo



in sink erator

**FRANKE**

 **Electrolux**

**beko**

la vita è bella  
**ZANUSSI**  
ITALIAN SINCE 1914

 **smeg**  
technology with style

 **cople**





## STEP 5 PICK YOUR INSTALLATION PACKAGE



No one fits a Magnet kitchen quite like one of our own installers, and that's because we constantly review the skills and training of all our staff. You can rest assured that your kitchen has been installed to the government-backed TrustMark standard, giving you full payment protection and peace of mind. And with our Gold, Silver and Bronze installation packages, there's an option to suit every kitchen, and every budget.

### OUR INSTALLATION PACKAGES



#### BRONZE

Our simplest service package, Bronze includes all of our installation essentials.



#### SILVER

Our second-tier option, Silver includes both after care visits and plumbing connections.



#### GOLD

Our premium offering, Gold is the full package and includes gas and electrical connections.

WHAT'S INCLUDED?	BRONZE	SILVER	GOLD
Installer pre-fit technical survey	•	•	•
Removal of existing kitchen and waste removal for recycling		•	•
Fitting of units, frontals, panels, trims and appliances (no connections)	•	•	•
Fitting of worktops, including joints, hob and sink cut-outs (laminare)	•	•	•
Fitting of sink and taps – no plumbing connection	•	•	•
Plumbing connections – sink, taps and appliances		•	•
Electrical connections, other electrical works and certification			•
Gas appliance disconnect, reinstallation and certification			•
Next day fast-tracked replacements (exclusions apply)	•	•	•
Post installation home check by a designer	•	•	•
TrustMark – insurance backed peace of mind	•	•	•
Smart Care – 12 month after care visit (Smart Care Plus includes 24 month visit)		•	•

## STEP 6 DESIGN AND QUOTE



Magnet is the UK's largest kitchen retailer and while our focus is on creating your perfect kitchen, our true passion is design. As part of Nobia, the biggest kitchen group in Europe, we're lucky enough to have access to the very best design expertise in the industry, ensuring our kitchens are always on-trend and built for whatever life throws at them.

### WITH YOU EVERY STEP OF THE WAY

Our design service is all about you and what you want from your kitchen. We'll help you plan and finalise everything, from the perfect layout to the finishing touches.

Your kitchen project will be managed by an appointed Magnet designer, and they will be on hand to guide you through our Kitchens Made Easy process, which is all part of our unique and comprehensive Full Circle Service package.

### A DESIGN EXPERT DEDICATED TO YOU

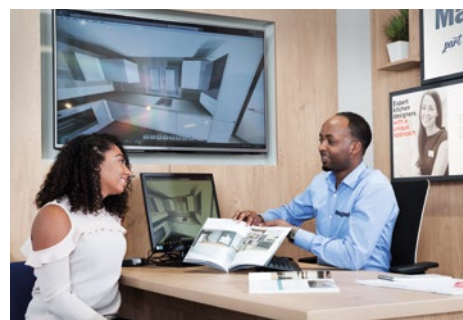
Your personal designer will work with you using the latest digital technology to create a unique design that's perfect for you and your home. They'll work to your budgets and provide accurate, itemised quotes. They're on hand to help you with all the decisions you'll make, from selecting your kitchen style and colour, to choosing your appliances, and deciding on installation and how to pay.

All Magnet kitchen designers:

- Are experienced in kitchen design, space planning, appliance specifications and the latest safety regulations
- Receive regular training on the latest style and design trends from our central product development centre
- Manage every aspect of the kitchen buying process; they'll never refer you to a separate department or call centre

Our designers use the latest design software so you can see your kitchen come to life with high quality, 3D computer generated visuals.

You'll also be able to track and manage every aspect of your kitchen design using the dedicated My Project area of our website. If you're interested in one of our kitchens, booking an appointment with one of our highly qualified designers is a great place to start.







## CLICK TO CREATE

If you'd rather get creative at home, you can make a start using our online design and inspiration tools. You can also save your progress using **My Project**.

To use **My Project** simply sign up for an account and begin saving your favourite products, uploading your measurements, sharing designs and collaborating with our expert designers.

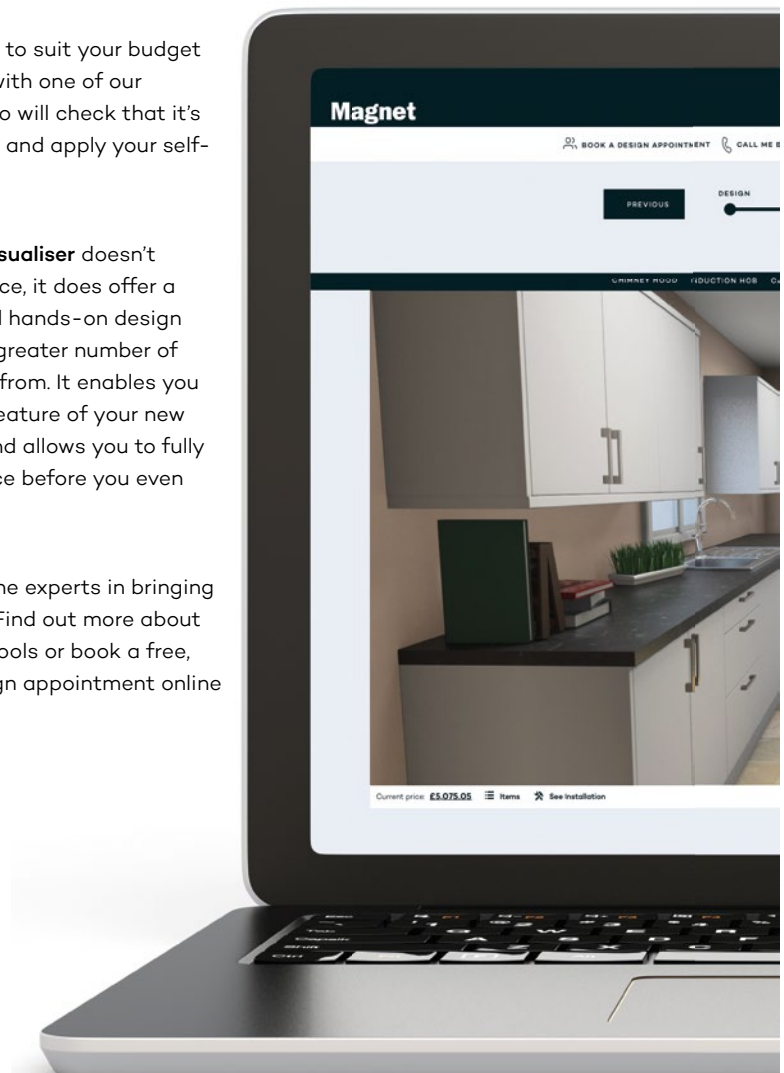
In need of inspiration? Discover your kitchen personality with our fun **Kitchenality** quiz. Just answer five simple questions and we'll help you find out what style of kitchen you should be cooking up a storm in.

**Quick Design & Price** allows you to design and cost up your dream kitchen in minutes. Input your measurements, and select your preferred cabinet options and appliances to create a 3D visual that will bring your new kitchen to life and even provide a guide price.

Adjust your design to suit your budget and then share it with one of our design experts, who will check that it's technically perfect and apply your self-design discount.

While our **Room Visualiser** doesn't provide a guide price, it does offer a more accurate and hands-on design experience with a greater number of options to choose from. It enables you to pick out every feature of your new kitchen in detail and allows you to fully visualise your space before you even step in store.

At Magnet, we're the experts in bringing your vision to life. Find out more about our online design tools or book a free, no obligation design appointment online at [magnet.co.uk](http://magnet.co.uk).



## STEP 6 PAYMENT OPTIONS



Life is anything but predictable. At Magnet, we understand that and offer a range of ways to pay. You can pay in full straightaway or pay a low deposit with your order and the balance 14 days before delivery. Alternatively, you can take advantage of one of our flexible finance packages detailed below.

### BUY NOW PAY LATER

With our Buy Now Pay Later option, it's even easier to get the kitchen you want, when you want it. You pay a minimum of £100 deposit, then nothing else for the next 12 months. After the 12 months, you can either settle the balance in full with a small fee of £25, or choose to spread the cost over 60 months at 6.9% APR representative.

Representative example:

CASH PRICE (inc. deposit)	£5,000
Agreement duration	71 months
Annual rate of interest	6.9% p.a. variable
Representative APR	6.9% APR variable
Deposit	£300
60 monthly payments	£98.24
Total amount credit	£4,700
Total amount payable	£5,894.40

### PAY MONTHLY

Our Pay Monthly option means you can spread the cost over 24, 36 or 60 months with an initial minimum deposit of just £100. And because we believe in flexibility, you can also increase payments and make early repayments, if you prefer.

Representative example:

CASH PRICE (inc. deposit)	£5,000
Agreement duration	60 months
Annual rate of interest	5.9% p.a. variable
Representative APR	5.9% APR variable
Deposit	£300
60 monthly payments	£90.34
Total amount credit	£4,700
Total amount payable	£5,420.40

### AM I ELIGIBLE FOR FINANCE?

If you fit all the criteria below, you can apply for any one of our finance options.

- Applicants must be 18 years or over on application date
- In permanent UK residence – minimum 3 years
- Fulfil one of the following employment criteria
  - In regular, permanent employment working minimum of 16 hours per week

- Retired from regular employment. Minimum age 50
- Not working through disability
- Self employed

Credit is subject to application and status. Minimum spend £250. Magnet Limited acts as the credit broker and not the lender. Barclays finance acts as the lender.

Finance arranged by Magnet Ltd, Allington Way, Darlington, DL1 4XT who acts as a credit broker and not the lender Magnet Ltd. Only offers products from Barclays Partner Finance. Barclays Partner Finance is the lender. Barclays Partner Finance is a trading name of Clydesdale Financial Services Limited a wholly owned subsidiary of Barclays Bank PLC. Clydesdale Financial Services Limited is authorised and regulated by the Financial Conduct Authority (Financial Services Register number 311753) Registered in England. Registered No 2901725. Registered office: 1 Churchill Place, London. E14 5HP. Credit is subject to application and status. Ask in store for details. Finance is available across all Magnet kitchens.





## STEP 7 ORDER & DELIVERY

Once you've finalised your design and quote, we'll plan your delivery and installation dates with you. Our customer care team will provide your delivery slot and be in regular contact to check all is okay and discuss access. Magnet kitchens are delivered by two professionals who are experts in handling kitchen products. They'll help you check your delivery so you know you've got everything you need before installation begins. All that's left is for you is to make your new Magnet kitchen part of the family.







# AMAZING MOMENTS DELIVERED WITH FANTASTIC SERVICE

---

At Magnet, we know how important the kitchen is to your world. It's the place where the little things and the big things that make family life come together. Unique to Magnet, our Full Circle Service combines all the elements of perfect service, so whatever you need, from start to perfect finish, it's all there – simply pick what's right for you.

## HOME SURVEY

Our designers are happy to visit your home to take accurate measurements and get an idea of what you want from your new kitchen. Your designer will be your personal contact, and will look after your project from start to finish.

## SMART DESIGN

Because we only design kitchens, we're experts at it. We stay on top of the latest trends, technologies and design possibilities. Using the latest 3D technology, we'll create a computer generated image of how your kitchen will look from every angle.

## PERSONALISATION

We can recommend lots of ways to make your kitchen really 'yours', from stunning worktops to ingenious storage solutions and lighting. After all, we know you don't want your kitchen to look like everyone else's.

## MADE TO ORDER

Everything is made to your exact requirements. We have our own UK manufacturing plant and we only begin to build your customised kitchen after your order has been placed.

## INSTALLATION

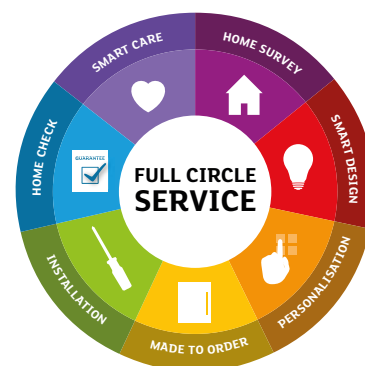
Our approved installers know Magnet kitchens inside out, so they get the job done quickly and efficiently. Their work starts with a pre-fit technical survey and ends with the issue of your 24 month workmanship guarantee. And for added peace of mind, we are operating members of the government-backed TrustMark scheme, which means that our installers are selected, approved and monitored to ensure they are 100% trustworthy.

## HOME CHECK

If you choose our installation service, your Magnet designer will visit within 14 days to hand over your guarantee. They will also check you are happy with the fit and help you get any issues resolved straight away.

## SMART CARE

If you've chosen Magnet to install your kitchen, and you'd like us to, we'll visit your home one year after installation to conduct a free Smart Care check. This means we'll give your kitchen a proper check over to make sure it's looking and performing exactly as it should be. If you chose a Uniquely kitchen, you'll be entitled to a further check after 24 months as part of the Smart Care Plus package.



**SMART**  
DESIGN

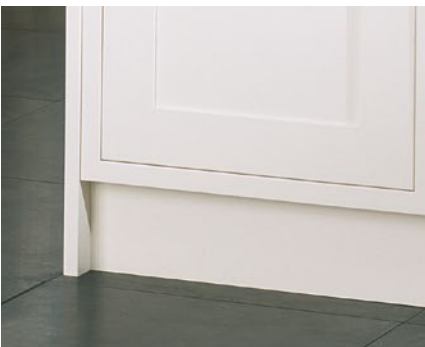
**SMART**  
CARE

**SMART**  
CARE PLUS

# QUALITY THAT STANDS THE TEST OF TIME

---

Our passion for product quality is what drives us. No matter what Magnet kitchen you choose or what service package you decide on, you can be sure you'll get a kitchen of the highest standard that will stand up to whatever life throws at it.



## QUALITY COMES AS STANDARD

Magnet quality isn't just about outstanding kitchen designs that can stand up to the stresses and strains of everyday family life, or the industry leading guarantees we offer on our range of cabinets.

It's about the attention to detail that ensures everything is made and checked to the highest standards, something that's shown by our FIRA Gold Award for product quality and craftsmanship

- All cabinets are produced in our state-of-the-art UK manufacturing facility
- Smooth close mechanisms are fitted as standard on all ranges to prevent wear and tear
- Adjustable shelving and clip-on, co-ordinated plinths provide the perfect finishing touch
- Our removable backboards might go unseen but they provide easy access to pipes and plumbing
- Cabinets are made from either 18mm or 16mm white or oak textured board



## OUR GUARANTEES TO YOU

We're so confident in the quality of our kitchen cabinets that they all come with industry-leading guarantees.

Our Simply Ready to Assemble cabinets come with a 15-year guarantee, our Factory Assembled cabinets come with a 20-year guarantee, while our Premium iD3 cabinets come with a lifetime guarantee.

## A HISTORY OF QUALITY

We have a history that's as unique as our kitchens. Established 100 years ago in 1918, we've grown to become the UK's leading kitchen specialist, and part of Europe's largest kitchen group.

We place craftsmanship and design at the heart of everything we do, and along with our unrivalled service standards we create kitchens that meet and reflect the needs of modern family life.







### A NAME YOU CAN TRUST

We were the first national kitchen retailer to achieve the government-backed TrustMark standard. This means we can promise reliability, satisfaction and quality workmanship when we install your kitchen, as well as providing full payment protection and complete peace of mind.

TrustMark is an initiative from the government, consumer groups and industry that helps you find reliable and trustworthy companies for home improvement and maintenance work.

Find out more at [trustmark.org.uk](http://trustmark.org.uk)

### ENVIRONMENTALLY AWARE

We manage our operations in accordance with the international ISO 14001 standard, complying fully with all relevant environmental legislation.

- All our cabinets are FSC® certified
- Member of WWF 95+ GROUP
- BS EN ISO 14001:2004 Environmental Management System Standard (EMS 61465)
- All cabinets supplied with full chain of custody

We fully recognise our responsibility to minimise the impact of our business on the planet, and are constantly seeking ways to improve our energy efficiency, avoid pollution and minimise waste.

### REASSURANCE FROM THE FURNITURE OMBUDSMAN

Our membership of The Furniture Ombudsman represents our commitment to fair trade, quality and outstanding customer service.

If you choose our installation service you are eligible for the payment protection scheme through The Furniture Ombudsman, so if there is anything you are not happy with you have an intermediary to go to for advice. Although this is very unlikely, we believe you should have this extra reassurance.

The Furniture Ombudsman is an independent organisation set up by the Office of Fair Trading to improve the service offered by retailers and manufacturers in the furniture industry.

Visit [thefurnitureombudsman.org](http://thefurnitureombudsman.org) or call 0845 653 2064.



FM535144



# Showrooms

With showrooms all across the country, we're never far away. You can either find your nearest one here, or log on to [www.magnet.co.uk](http://www.magnet.co.uk), and click on store locator. Please remember that not every showroom is able to display our full product range. Our online showroom locator will also tell you what you can see in each showroom.

Standard opening hours are Mon–Sat 9am–5pm, with selected stores open on Sunday and late night Thursday.

**Please note opening hours vary from store to store.**

**Please visit [www.magnet.co.uk](http://www.magnet.co.uk) for individual opening hours.**

## SCOTLAND

### Aberdeen

12 St Machar Road  
AB24 2UU  
Tel: (01224) 492894

### Aberdeen Shop

139 George Street  
AB25 1HU  
Tel: (01224) 749823

### Ayr

15 Old Farm Road  
Heathfield Ind. Est.  
KA8 9ST  
Tel: (01292) 265568

### Coatbridge

247 Main Street  
ML5 3HH  
Tel: (01236) 436965

### Corstorphine (Edinburgh West)

164/170 St John's Road  
EH12 8AZ  
Tel: (0131) 334 9329

### Dundee

80 Lochee Road  
DD1 5RJ  
Tel: (01382) 203037

### Dunfermline

45–47 Baldrigeburn  
Fife  
KY12 9EQ  
Tel: (01383) 720155

### Edinburgh

10B Brunswick Place  
Leith Walk  
EH7 5HW  
Tel: (0131) 558 8687

### Galashiels

Tweedbank Ind. Est.  
TD1 3RS  
Tel: (01896) 756040

### Glasgow Haggs Road

45 Haggs Road  
G41 4AZ  
Tel: (0141) 632 9130

### Glasgow Shop

249/257  
Sauchiehall Street  
G2 3EZ  
Tel: (0141) 331 1832

### Inverness

Unit 1  
Fresson Business Park  
Stadium Road  
IV1 1FJ  
Tel: (01463) 222888

### Musselburgh

108 Market Street  
EH21 6QA  
Tel: (0131) 665 0527

### Perth

Dunkeld Road  
PH1 3AA  
Tel: (01738) 634007

### Stirling

16 Whitehouse Road  
w Ind. Est.  
FK7 7SP  
Tel: (01786) 451725

## NORTH EAST

### Darlington

Unit 6  
5 Barrington Way  
DL1 4WF  
Tel: (01325) 285517

### Durham

Rhodes Court  
Rennys Lane  
DH1 2RS  
Tel: (0191) 386 8695

### Gateshead

201 Kingsway South  
NE11 0SH  
Tel: (0191) 4914449

### Gosforth

Unit 1  
Mill House  
Haddricks Mill Road  
Newcastle Upon Tyne  
NE3 1QL  
Tel: (0191) 285 1889

### Stockton-on-Tees

Portrack Lane  
TS18 2PS  
Tel: (01642) 675932

### Sunderland

Pottery Road  
Low Southwick  
SR5 2BT  
Tel: (0191) 5480077

## NORTH WEST

### Aintree

Units 6 & 8 Brookfield  
Business Park  
Muir Road  
Off Brookfield Drive  
L9 7AR  
Tel: (0151) 5301 871

### Altrincham

7 Stamford New Road  
WA14 1BD  
Tel: (0161) 928 9059

### Bolton

Spa Road  
BL1 4SL  
Tel: (01204) 386908

### NEW Blackburn

Grimshaw Park  
BB2 3AG  
Tel: (01254) 781963

### Bromborough

Units 1–2,  
Tebay Retail Park  
Tebay Road  
CH62 3AB  
Tel: (0151) 334 7538

### Chester

1 Stendall Road  
Deva Retail Centre  
CH1 4LU  
Tel: (01244) 371734

### Isle of Man

Douglas Head Road  
Douglas  
IM1 5BF  
Tel: (01624) 623881

### Lancaster

Money–Gates  
Ashton Road  
LA1 5AH  
Tel: (01524) 382320

### Liverpool

315 Edge lane  
Fairfield  
L7 9LF  
Tel: (0151) 228 7043

### Macclesfield

King Edward Street  
SK10 1AE  
Tel: (01625) 437186

### Northwich

Unit A  
Chester Way  
CW9 5NN  
Tel: (01606) 46451

### Ormskirk

Units 4,  
5 & 6 Hattersley Way  
Off Burscough Road  
L39 2AN  
Tel: (01695) 581091

### Preston

Watery Lane  
Ashton-on-Ribble  
PR2 1AU  
Tel: (01772) 727676

### Sale

122 Cross Street  
M33 7AW  
Tel: (0161) 976 3246

### Stockport

Hempshaw Lane  
SK1 4LT  
Tel: (0161) 477 2492

### Warrington

Holmesfield Road  
WA1 2DS  
Tel: (01925) 658 131

## YORKSHIRE

### Barnsley

Old Mill Lane  
S71 1LH  
Tel: (01226) 770849

### Beverley

Agriculture House  
New Walkergate  
HU17 9EP  
Tel: (01482) 301190

### Bingley

Keighley Road  
Crossflatts  
BD16 2EE  
Tel: (01274) 511114

### Doncaster

Telford Road  
Don Ind. Estate  
Off York Road  
DN5 8LX  
Tel: (01302) 789654

### Guiselley

Bradford Road  
White Cross  
LS20 8NJ  
Tel: (01943) 879631

### Harrogate

Plantation House  
Ripon Road  
HG1 2BS  
Tel: (01423) 509183

### Huddersfield

Fair Street  
Off Lockwood Road  
HD1 3QB  
Tel: (01484) 515128

### Hull

Rotterdam Road  
Sutton Fields Ind. Est.  
Off Leeds Road  
HU7 0XD  
Tel: (01482) 825451

### Leeds

221 North Street  
LS7 2AA  
Tel: (0113) 245 7990

### Leeds (Hunslet)

Unit 10  
City South Trade Park  
LS10 2BB  
Tel: (0113) 2716330

### Rotherham

Meadow Bank Road  
S61 2NF  
Tel: (01709) 557831

### Scarborough

Seamer Road  
YO12 4DH  
Tel: (01723) 367459

### Sheffield

Unit 3  
411 Queen's Road  
S2 4DR  
Tel: (0114) 270 6268

### Skipton

Midland Sawmills  
Broughton Road  
BD23 1RT  
Tel: (01756) 798011

### York

Julia Avenue  
Monks Cross  
YO32 9JR  
Tel: (01904) 655779

## EAST MIDLANDS AND EAST ANGLIA

### Amersham

10 Sycamore Road  
HP6 5DR

### Bedford

16 Kingsway  
St Johns Street  
MK42 9BA  
Tel: (01234) 351173

### Burton-Upon-Trent

Dettingen Way  
DE14 1AA  
Tel: (01283) 516639

### Bury St Edmunds

Blenheim Business Park  
Off Newmarket Road  
IP33 3TU  
Tel: (01284) 762155

### Cambridge

18 Mercers Row  
Off Newmarket Road  
CB5 8HY  
Tel: (01223) 308710

### Chesterfield

Storforth Lane  
Birdholme  
S40 2TU  
Tel: (01246) 557193

### Derby

Ascot Drive  
DE24 8GZ  
Tel: (01332) 208343

### Ipswich

1 Arkwright Road  
IP2 0UB  
Tel: (01473) 257686

### Leicester

489 Aylestone Road  
LE2 8TB  
Tel: (0116) 2839875

### Lincoln

Outer Circle Road  
LN2 4JA  
Tel: (01522) 569436



**Loughborough**  
No. 2  
Morley St Ind. Est.  
Nottingham Road  
LE11 1EW  
Tel: (01509) 217726

**Mansfield**  
165a Sutton Road  
NG18 5HT  
Tel: (01623) 622 359

**Melton Mowbray**  
Jubilee Street  
Off Snow Hill  
LE13 1ND  
Tel: (01664) 562305

**Milton Keynes**  
25 Peverel Drive  
Granby  
MK1 1NW  
Tel: (01908) 649562

**Newark**  
Brunel Drive  
NG24 2DE  
Tel: (01636) 702935

**Northampton**  
Units 1 & 2  
St James Trade Park  
St James Mill Road  
NN5 5JW  
Tel: (01604) 764298

**Norwich**  
171 Mile Cross Lane  
NR6 6RE  
Tel: (01603) 415434

**Nottingham**  
1 Chettles Trade Park  
Unit off Midland Way  
NG7 3EP  
Tel: (0115) 9708349

**Peterborough**  
Fengate/Boongate  
Fengate Ind. Est.  
PE1 5PE  
Tel: (01733) 553528

**Rugby**  
32 Somers Road  
Somers Road Ind. Est.  
CV22 7DH  
Tel: (01788) 574303

## WEST MIDLANDS

**Banbury**  
Tramway Road  
Tramway Ind. Est.  
OX16 5TD  
Tel: (01295) 277179

**Birmingham (Minworth)**  
Units A3 - A4  
Minworth Trade Park  
Stockton Close  
Off Forge Lane  
Sutton Coldfield  
B76 1DH  
Tel: (0121) 351 5056

**Cannock**  
Select House  
Walsall Road  
Bridgetown  
WS11 0JH  
Tel: (01543) 505325

**Coventry**  
Meto Lakha Close  
Off Phoenix Way  
CV6 5QS  
Tel: (02476) 634704

**Dudley**  
Unit 1 Ionic Park  
Birmingham New Road  
DY1 4SJ  
Tel: (0121) 5206907

**Evesham**  
Units 8, 9 and 10  
Evesham Trade Centre  
Davies Road  
WR11 1XG  
Tel: (01386) 49189

**Hereford**  
Harrow Road  
Off Plough Lane  
HR4 0EH  
Tel: (01432) 267543

**Kidderminster**  
Hoobrook Ind. Est.  
Worcester Road  
DY10 1HY  
Tel: (01562) 68986

**Leamington Spa**  
Ramsey Road  
Sydenham Ind. Est.  
CV31 1PL  
Tel: (01926) 420866

**Lichfield**  
118 Birmingham Road  
WS14 9BW  
Tel: (01543) 256271

**Redditch**  
Shawbank Road  
B98 8YN  
Tel: (01527) 520304

**Shrewsbury**  
264 Monkmoor Road  
Shropshire  
SY2 5ST  
Tel: (01743) 235393

**Solihull**  
Unit 1-2  
Sears Retail Park  
Oakenshaw Road  
B90 4QY  
Tel: (0121) 733 7362

**Stafford**  
Greyfriars Place  
ST16 2SD  
Tel: (01785) 259713

**Stirchley**  
1581 Pershore Road  
B30 2JF  
Tel: (0121) 451 3001

**Stoke-on-Trent**  
Elder Road  
Cobridge  
ST6 2JF  
Tel: (01782) 274245

**Stourbridge**  
97/100 High Street  
Amblecote  
DY8 4HN  
Tel: (01384) 390157

**Stratford-upon-Avon**  
Avon Ind. Est.  
Junc. Birmingham Road  
Wharfe Road  
CV37 0AD  
Tel: (01789) 299692

**Walsall**  
Units 5 & 7  
Walsall Enterprise Park  
Wednesbury Road  
WS2 9HQ  
Tel: (01922) 639968

**Wolverhampton**  
Unit 3 Millbuck Ind. Est. Shaw  
Road  
Bushbury  
WV10 9LA  
Tel: (01902) 424783

**Worcester**  
Blockhouses Close  
Off Foundry Street  
WR1 2BU  
Tel: (01905) 731583

## WALES

**Aberystwyth**  
Llanbadarn Fawr Trading  
Estate  
SY23 3RJ  
Tel: (01970) 615301

**Cardiff**  
Unit 1  
Avenue Retail Park  
Newport Road  
CF23 9AE  
Tel: (02920) 472396

**Colwyn Bay**  
256 Conway Road  
Mochdre  
LL28 5DS  
Tel: (01492) 545431

**Haverfordwest**  
Withybush Road  
Withybush  
SA62 4BN  
Tel: (01437) 765531

**Merthyr Tydfil**  
Pant Ind. Est.  
Dowlais  
CF48 2SR  
Tel: (01685) 377933

**Newport**  
Lee Way Ind. Est.  
NP19 4SL  
Tel: (01633) 277355

**Swansea**  
Unit 6B  
Lion Way  
SA7 9EH  
Tel: (01792) 773405

**Wrexham**  
Ruabon Road  
LL13 7RF  
Tel: (01978) 265 748

## LONDON

**Archway**  
734-736 Holloway Road  
N19 3JF  
Tel: (0207) 281 2303

**Balham**  
264 Balham High Road  
Balham  
SW17 7AN  
Tel: (0208) 6553 560

**Beckenham**  
Unit 2  
Triple Two Centre  
Tannery Close  
Off Croydon Road  
BR3 4BY  
Tel: (020) 8656 7917

**Bexleyheath**  
139 Broadway  
DA6 7EZ  
Tel: (0208) 3016 425

**Brentford**  
Unit 1  
Kew Bridge Distribution  
Centre  
Lionel Road  
TW8 9QR  
Tel: (020) 8847 4226

**Chingford**  
Unit 5  
Highams Park Ind. Est.  
Jubilee Avenue  
E4 9JD  
Tel: (020) 8531 0692

**Clapham**  
Unit 1  
170-188 Acre Lane  
Clapham/Brixton  
SW2 5UL  
Tel: (0207) 274 5722

**Croydon**  
Unit C9  
Thornton Road Ind. Est.  
Peall Road  
CRO 3BT  
Tel: (0208) 684 5691

**Egham**  
21/23 The Precinct  
High Street  
TW20 9HN  
Tel: (01784) 434 451

**Enfield**  
Unit 2a & 2b Martinbridge  
Trading Estate  
Lincoln Road  
EN1 1SP  
Tel: (0208) 367 5400

**Esher**  
40 High Street  
KT10 9QY  
Tel: (01372) 468372

**Fulham**  
153 Hurlingham Road  
Putney Bridge  
SW6 3NN  
Tel: (020) 7384 9567

**Golders Green**  
11-13 Temple Fortune Parade  
Finchley Road  
NW11 0QS  
Tel: (020) 8455 8947

**Greenford**  
Unit G1  
The Broadway  
UB6 9BE  
Tel: (0208) 813 1770

**Greenwich**  
1 Fenton Parade  
Woolwich Road  
SE10 0FY  
Tel: (0208) 858 4154

**Harrow Shop**  
Stewart House  
414/436 Kenton Road  
Kenton  
HA3 9DZ  
Tel: (020) 8204 9436

**NEW Harlow**  
6 Ascent Park  
Edinburgh Way  
CM20 2HW  
Tel: (01279) 357401

**Islington**  
321 Essex Road  
N1 2BD  
Tel: (0207) 704 1961

**Kensington**  
245/259  
Kensington High Street  
W8 6SA  
Tel: (020) 7938 3377

**Kingston upon Thames**  
Unit 6  
Fairfield Trade Park  
Hogsmill Lane  
Off Villers Road  
KT1 3AY  
Tel: (020) 8974 9283

**Loughton**  
215 High Road  
IG10 1BB  
Tel: (0208) 418 0218

**Orpington**  
149-151 High Street  
BR6 0LN  
Tel: (01689) 897707

**Potters Bar**  
45/51 Barnet Road  
Potters Bar  
EN6 2QY  
Tel: (01707) 645186

**Romford**  
78 South Street  
RM1 1RX  
Tel: (01708) 377011

**Ruislip**  
85 High Street  
HA4 8JB  
Tel: (01895) 624995

**Staples Corner**  
Units C2-C3  
Oxgate Centre  
NW2 7JA  
Tel: (0208) 4504492

**Sutton**  
Unit C1  
301 High Street  
SM1 1AN  
Tel: (0208) 643 8407

**NEW Walthamstow**  
Retail Unit 2  
5b Blackhorse Lane  
E17 6SX  
Tel: 0203 937 9901

**Watford**  
7 Caxton Way  
Watford Business Park  
WD18 8RL  
Tel: (01923) 255558

**West End**  
78/80 Wigmore Street  
W1U 2SL  
Tel: (020) 7486 8711

**Willesden (Park Royal)**  
Unit 7  
Frogmore Ind. Est.  
Acton Lane  
NW10 7NQ  
Tel: (020) 8960 4333

**Wimbledon**  
Unit 1  
South Wimbledon Park  
Jubilee Way  
SW19 3XD  
Tel: (0208) 543 9695

## SOUTH EAST

**Ashford**  
Unit A1-A5  
Isis Business Park  
Orbital Park  
TN24 0SQ  
Tel: (01233) 500 682

**Aylesbury**  
82 Cambridge Street  
The Junction Retail Park  
HP20 1BA  
Tel: (01296) 427587

**Bishops Stortford**  
Unit 1  
Stort Valley Ind. Park  
Stansted Road  
CM23 2TU  
Tel: (01279) 506372

**Brighton**  
Basin Road North  
Aldrington Basin  
Portslade  
BN41 1WA  
Tel: (01273) 415718

**Canterbury**  
Broad Oak Road  
CT2 7PX  
Tel: (01227) 764564

**Caterham**  
63A-65 Croydon Road  
Surrey  
CR3 6PD  
Tel: (01883) 346 683

**Charlton**  
Unit 2  
Meridian Trading Estate  
Lombard Wall  
SE7 7SW  
Tel: (0208) 293 9452

**Chelmsford**  
42 Hanbury Road  
Widford Ind. Est.  
CM1 3AE  
Tel: (01245) 252277

**Colchester**  
2 Tollgate East  
Stanway  
CO3 8RQ  
Tel: (01206) 794233

**Crawley**  
Telford Place  
Southgate Avenue  
RH10 1SY  
Tel: (01293) 537881

**Crayford**  
Optima Park  
Thomas Road  
DA1 4QX  
Tel: (01322) 525304

**Dorking**  
120 South Street  
Dorking Surrey  
RH4 2EU  
Tel: (01306) 879916

**Eastbourne**  
5 Marshall Road  
Hampden Park  
BN23 6QU  
Tel: (01323) 509857

**Farnborough**  
Unit 17  
5 Invincible Road  
GU14 7QU  
Tel: (01252) 548280

**Gillingham**  
Gillingham Business Park  
Ambley Road/Watling  
Street (A2)  
ME8 0PU  
Tel: (01634) 387063

**Guildford**  
Woodbridge Road  
GU1 1DP  
Tel: (01483) 565697

**Hadleigh**  
Victoria House Corner  
24 London Road  
Benfleet  
SS7 2QP  
Tel: (01702) 554875

**Hastings**  
1 Telford Road  
St Leonards-on-Sea  
TN38 9LY  
Tel: (01424) 851313

**Hemel Hempstead**  
Units 4, 6 & 8  
McDonald Way  
Hemel Hempstead Ind. Est.  
HP2 7EB  
Tel: (01442) 252401

**High Wycombe**  
29-31 Oxford Road  
HP11 2DJ  
Tel: (01494) 464655

**Hitchin**  
Ground Floor  
113 Bancroft & 98/100  
Heritage Road  
SG5 1LS  
Tel: (01462) 454958

**Leatherhead**  
Unit 1  
Leatherhead Ind. Est.  
Station Road  
KT22 7AG  
Tel: (01372) 379050

**Maidstone**  
Lower Boxley Road  
ME14 2UU  
Tel: (01622) 690050

**Oxford**  
Unit 2, Factory Estate  
Osney Mead Ind. Est.  
OX2 0ES  
Tel: (01865) 794853

**Ramsgate**  
Newington Road  
CT12 6ED  
Tel: (01843) 583147

**Reading**  
6 Kingstreet Lane  
Winnersh  
RG41 5AS  
Tel: (0118) 989 1244

**Reading Shop**  
Unit 1B Reading Link Retail  
Park  
Rose Kiln Lane  
RG2 0SN  
Tel: (0118) 958 8998

**Sevenoaks**  
Unit 3  
Block 9 Vestry Road  
TN14 5EL  
Tel: (01732) 453890

**Sittingbourne**  
Unit 7A/B Trinity  
Trading Estate  
ME10 2PG  
Tel: (01795) 473637

**Slough**  
Petersfield Avenue  
SL2 5DW  
Tel: (01753) 691846

**Southampton (Hedge End)**  
Unit C  
Manaton Way  
SO30 2XW  
Tel: (01489) 796 238

**St Albans**  
Unit B  
188 Hatfield Road  
AL1 4LS  
Tel: (01727) 858570

**Stevenage**  
Unit 11  
Fulton Close  
Argyle Way  
SG1 2AF  
Tel: (01438) 369181

**Tunbridge Wells**  
68 Calverley Road  
TN1 2UJ  
Tel: (01892) 514427

**Twickenham**  
59 Staines Road  
TW2 5BH  
Tel: (0208) 8945952

**West Thurrock**  
Units 6, 7 & 8  
Thurrock Trade Park  
Oliver Road  
RM20 3ED  
Tel: (01708) 867168

#### SOUTH WEST

**Barnstaple**  
Upcott Avenue  
Pottington Ind. Est.  
Braunton Road  
EX31 1HN  
Tel: (01271) 321603

**Basingstoke**  
14 London Street  
Basingstoke  
RG21 7NU  
Tel: (01256) 328349

**Bath**  
6/7 Pinesway Ind. Est.  
Ivo Peters Road  
BA2 3QS  
Tel: (01225) 462617

**Bournemouth**  
438-448 Poole Road  
Branksome  
BH12 1DG  
Tel: (01202) 762388

**Bridgwater**  
Unit BB  
Wyld Road  
TA6 4BH  
Tel: (01278) 433488

**Bristol**  
Block C  
Cribbs Causeway Retail Park  
Lysander Road  
BS34 5UL  
Tel: (0117) 950 7109

**Bristol St Philips**  
Unit 2  
St Phillips Trade Park  
Albert Road  
BS2 0YB  
Tel: (0117) 971 5144

**Camborne**  
Station Yard  
Trevu Road  
TR14 7AB  
Tel: (01209) 710404

**Cheltenham**  
Unit L  
Runnings Road  
GL51 9NQ  
Tel: (01242) 236654

**Chichester**  
68 Bognor Road  
PO19 8NS  
Tel: (01243) 792437

**Chichester Shop**  
58 East Street  
PO19 1HL  
Tel: (01243) 788177

**Christchurch**  
Orchid Way  
off Stony Lane  
BH23 7LQ  
Tel: (01202) 479304

**Eastleigh**  
66 Twyford Road  
SO50 4HN  
Tel: (02380) 647120

**Exeter**  
69 Trusham Road  
Marsh Barton  
Trading Estate  
EX2 8DF  
Tel: (01392) 459650

**Fareham**  
244 Gosport Road  
PO16 0SS  
Tel: (01329) 822237

**Gloucester**  
Southbrook Retail Park  
Eastern Avenue  
GL4 3BU  
Tel: (01452) 416644

**Isle of Wight**  
Riverway Ind. Est.  
Newport  
PO30 5UX  
Tel: (01983) 521923

**Paignton**  
Borough Close  
off Borough Road  
TQ4 7EP  
Tel: (01803) 557213

**Plymouth**  
Transit Way  
off Crownhill Road  
Honicknowle  
PL5 3TW  
Tel: (01752) 784612

**Poole**  
12 Nuffield Estate  
BH17 0RB  
Tel: (01202) 673199

**Portsmouth**  
Unit A  
Fitzherbert Road  
PO6 1RU  
Tel: (02392) 381202

**Salisbury**  
Watt Road  
Churchfields Ind. Est.  
SP2 7UD  
Tel: (01722) 413668

**St Austell/Roche**  
Victoria Roche  
PL26 8HQ  
Tel: (01726) 890573

**Swindon**  
Athena Avenue  
Elgin Ind. Est.  
SN2 8HQ  
Tel: (01793) 520292

**Taunton**  
Venture Way  
Priorswood Ind. Est  
TA2 8DG  
Tel: (01823) 353956

**Trowbridge**  
Polebarn Road  
West Wiltshire  
BA14 7EG  
Tel: (01225) 751000

**Truro**  
Unit 1  
Oak Lane  
Treliske Ind. Est.  
Treliske  
TR1 3LP  
Tel: (01872) 240483

**Weymouth**  
Kent Close  
Granby Ind. Est.  
DT4 9TF  
Tel: (01305) 770377

**Yeovil**  
15 Lynx Trading Estate  
BA20 2NZ  
Tel: (01935) 472363

**Yeovil Shop**  
6A/6B Middle Street  
BA20 1LZ  
Tel: (01935) 477400

#### CHANNEL ISLANDS

**Guernsey**  
La Hure Mare Ind. Est.  
Northside Vale  
GY3 5UB  
Tel: (01481) 200149

Company Policy: The Company's policy is one of continuous improvement, and we reserve the right to alter the specification as the need arises. All goods to be supplied will be in accordance with our terms and conditions of sale. Credit Cards, Mastercard and Visa card facilities are available at most of our branches. Printed reproductions can only be taken as a guide to overall appearance. Due to the composition of the inks used in printing, the pictures may not exactly match the products. Copyright © Magnet Ltd. 2018. All copyright reserved by Magnet Ltd. No part of this publication may be reproduced, stored in a retrieval system, or transmitted in any form or by any means, electronic, mechanical, photocopying, recording or otherwise without the prior consent of: Magnet Limited, Allington Way, Darlington, County Durham DL1 4XT.

This brochure is an invitation to treat. Whilst every care is taken in the production of this brochure, Magnet cannot be held responsible for any errors or omissions. This brochure does not form part of a contract of sale.













**Magnet**

*part of the family*

[www.magnet.co.uk](http://www.magnet.co.uk)